

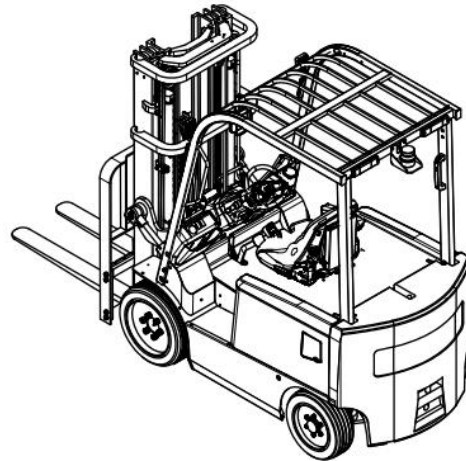


Cushion Electric FCB Series

FCB25M-3 / FCB25M-5 / FCB25M-7 / FCB25M-9 / FCB25M-11

FCB25M-13 / FCB25M-15 / FCB25M-17

Parts Catalogue



Original Instruction

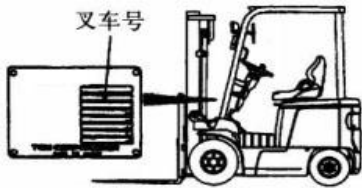
2023/10

INTRODUCTION

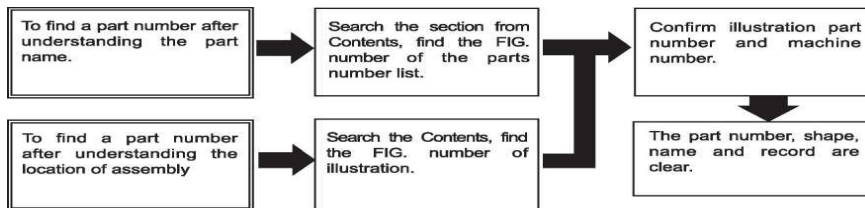
This Parts Catalogue contains the component parts of the FB forklifts FB20/FB25/FB30/FB35

How to order parts

When ordering, be sure to specify the model name, specification and serial number of your machine, as well as the part number and desired quantity for each part. The machine serial number (machine number) is indicated on the machine name plate.



Always use "Genuine Parts". We cannot guarantee any loss or trouble attributable to other parts than ours.



How to use the Parts Catalogue

Abbreviations and symbols

ASSY... Assembled unit.

RH Right-hand when viewed forward on the truck.

LHLeft-hand when viewed forward on the truck.

AR Quantity required.

*..... The marketable part set or kit.

TThickness. +..... .Not illustrated.

..... Not sold separately.

Materials and specifications subject to change without notice.

CONTENT

INTRODUCTION	1
FIG.1 LITHIUM BATTERY PACK	6
FIG.2 COMBINATION METER	7
FIG.3 COMBINATION SWITCH	8
FIG.4 HEAD LAMP & FRONT COMBINATION LAMP	9
FIG.5 REAR COMBNATION LAMP	10
FIG.6 BACK BUZZER	11
FIG.7 TRAVELLING MOTOR	12
FIG.8 LIST OF PARTS FOR ELECTRIC FORKLIFT TRANSMISSION (2T-2.5t) 1/2	13
FIG.8 LIST OF PARTS FOR ELECTRIC FORKLIFT TRANSMISSION (2T-2.5t) 2/2	14
FIG.9 LIST OF PARTS FOR ELECTRIC FORKLIFT TRANSMISSION (3T-3.5t) 1/2	15
FIG.9 LIST OF PARTS FOR ELECTRIC FORKLIFT TRANSMISSION (3T-3.5t) 2/2	16
FIG.10 DIFFERENTIAL GEAR (2T-2.5T)	17
FIG.11 DIFFERENTIAL GEAR (3T-3.5T)	18
FIG.12 STEERING AXLE ASSY (2T-2.5T) 1/2	19
FIG.12 STEERING AXLE ASSY (2T-2.5T) 2/2	20
FIG.13 STEERING AXLE ASSY (3T-3.5T) 1/2	21
FIG.13 STEERING AXLE ASSY (3T-3.5T) 2/2	22
FIG.14 DRIVE AXLE (2T-2.5T)	23

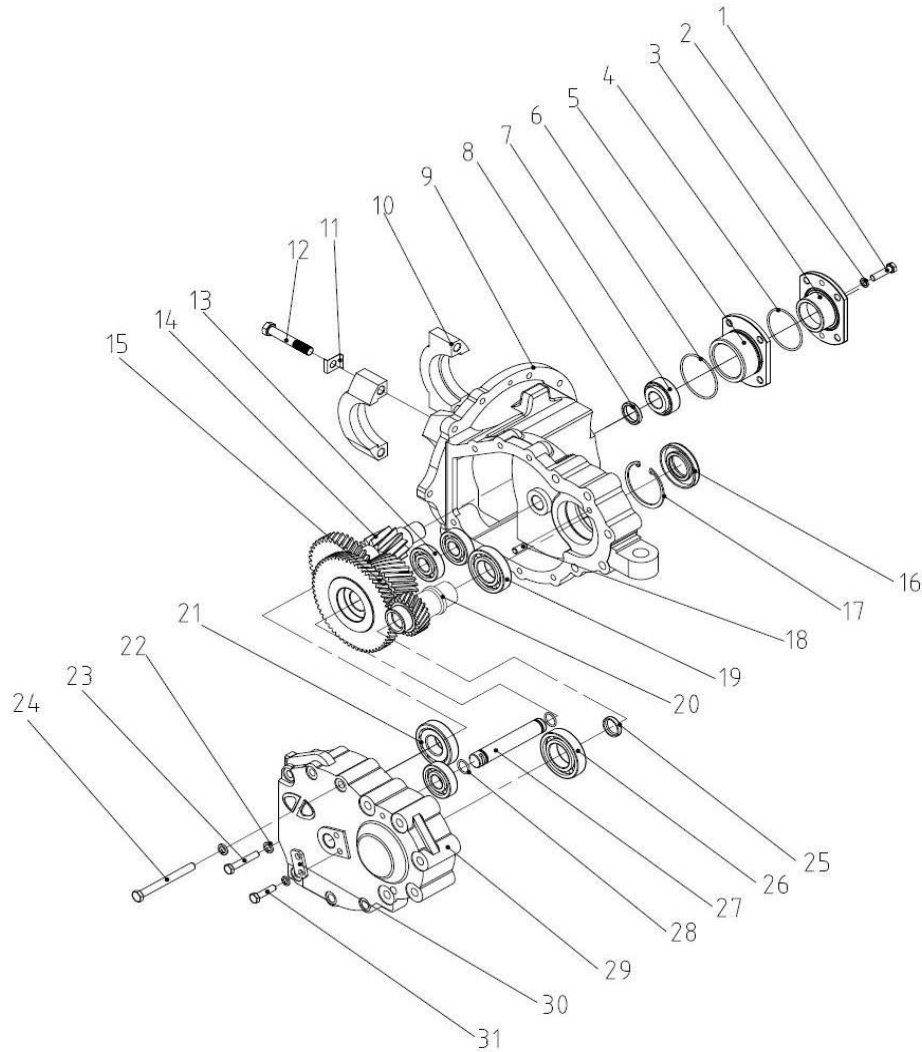
FIG.15 DRIVE AXLE (3T-3.5T) 1/2	24
FIG.15 DRIVE AXLE (3T-3.5T) 2/2	25
FIG.16 BRAKE ASSEMBLY, LH (2-2.5T) 1/2	26
FIG.16 BRAKE ASSEMBLY, LH (2-2.5T) 2/2	27
FIG.17 BRAKE ASSY, RH (2-2.5T) 1/2	28
FIG.17 BRAKE ASSY, RH (2-2.5T) 2/2	29
FIG.18 BRAKE ASSY, LH (3-3.5T) 1/2	30
FIG.18 BRAKE ASSY, LH (3-3.5T) 2/2	31
FIG.19 BRAKE ASSY, RH (3-3.5T) 1/2	32
FIG.19 BRAKE ASSY, RH (3-3.5T) 2/2	33
FIG.20 STEERING WHEEL UNIT	34
FIG.21 ORBITROL	35
FIG.22 ORBITROL FITTING	36
FIG.23 SUPPORTING FRAME	37
FIG.24 HUB NUT	38
FIG.25 FENDER	39
FIG.26 FRONT WHEEL	40
FIG.27 REAR WHEEL	41
FIG.28 ACCELERATE PEDAL (ELECTRIC)	42
FIG.29 FOOT PEDAL	43
FIG.30 FOOT PEDAL CYLINDER	44
FIG.31 BRAKE PIPE	45

FIG.32	HAND BRAKE	46
FIG.33	OIL TANK	47
FIG.34	AXLE SUPPORT	48
FIG.35	COUNTERWEIGHT	49
FIG.36	FRONT GUARD	50
FIG.37	OVERHEAD GUARD	51
FIG.38	Installation of rear pillar armrest	52
FIG.39	BONNET	53
FIG.40	COVER	54
FIG.41	FLOOR BOARD	55
FIG.42	FRONT COVER	56
FIG.43	FRONT SIDE COVER	57
FIG.44	SEAT	58
FIG.45	PUMP UNIT	59
FIG.46	GEAR PUMP	60
FIG.47	CONTROL VALVE	61
FIG.48	CONTROL VALVE FITTING	62
FIG.49	VALVE CONTROL	63
FIG.50	VALVE CONTROL [3SV] 1/2	64
FIG.50	VALVE CONTROL [3SV] 2/2	65
FIG.51	VALVE CONTROL [4SV] 1/2	66
FIG.51	VALVE CONTROL [4SV] 2/2	67

FIG.52 VALVE CONTROL KNOB	68
FIG.53 HYDRAULI FITTINGS	69
FIG.54 HYDRAULIC PIPELINE	70
FIG.55 HYDRAULIC LINE (MAIN)	71
FIG.56 TILT CYLINDER	72
FIG.57 TILT CYLINDER PIN	73
FIG.58 LABEL AND NAMEPLATE	74
FIG.59 FORK	75
FIG.60 LIFT BRACKET	76
FIG.61 BACKREST	77
FIG.62 MAST 1/3	78
FIG.62 MAST 2/3	79
FIG.62 MAST 3/3	80
FIG.63 LIFT CYLINDER (FRONT) 1/2	81
FIG.63 LIFT CYLINDER (FRONT) 2/2	82
FIG.64 LIFT CYLINDER (REAR) 1/3	83
FIG.64 LIFT CYLINDER (REAR) 2/3	84
FIG.65 LIFT CYLINDER (REAR) 3/3	85
FIG.66 MAST PIPING 1/2	86
FIG.66 MAST PIPING 2/2	87
FIG.67 OUTER MAST 1/2	88
FIG.67 OUTER MAST 2/2	89

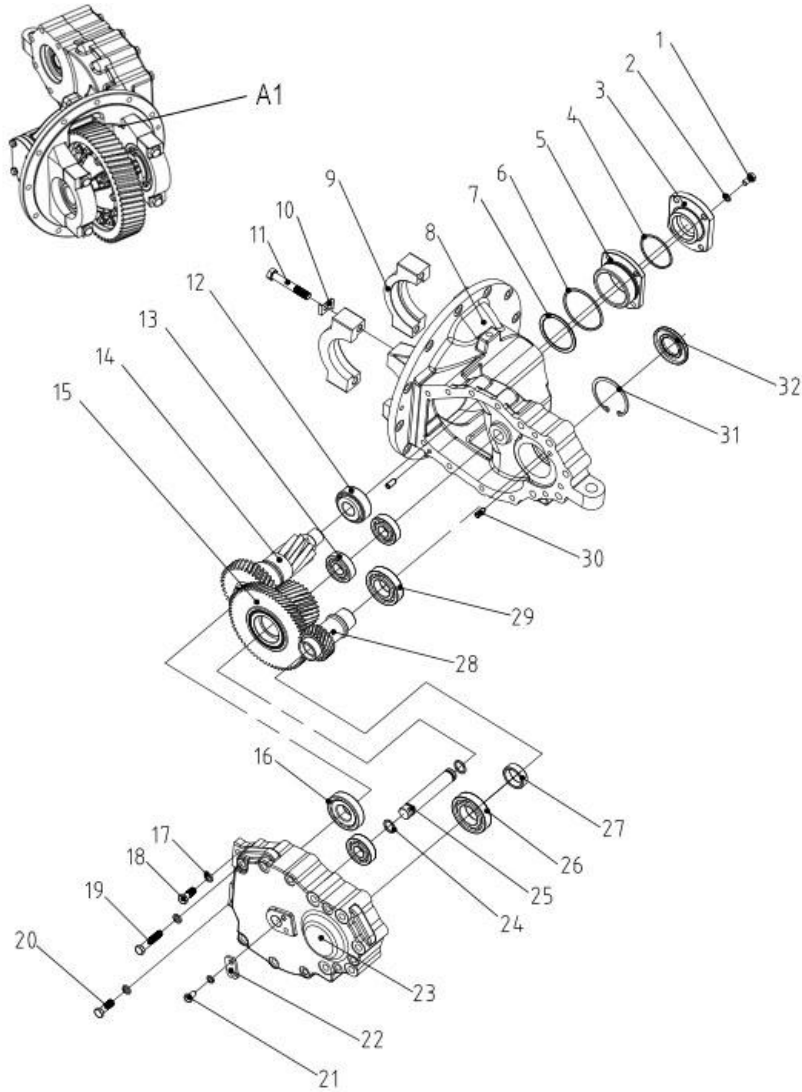
FIG.68 CONTROLLER.....	90
FIG.69 DC-DC & FUSE BOX.....	91
FIG.70 QUADRUPLE VALVE SWITCH.....	92
FIG.71 CABLE.....	93
FIG.72 ELECTRIC CONTROL SCHEMATIC.....	94

FIG.8 LIST OF PARTS FOR ELECTRIC FORKLIFT TRANSMISSION (2T-2.5t) 1/2



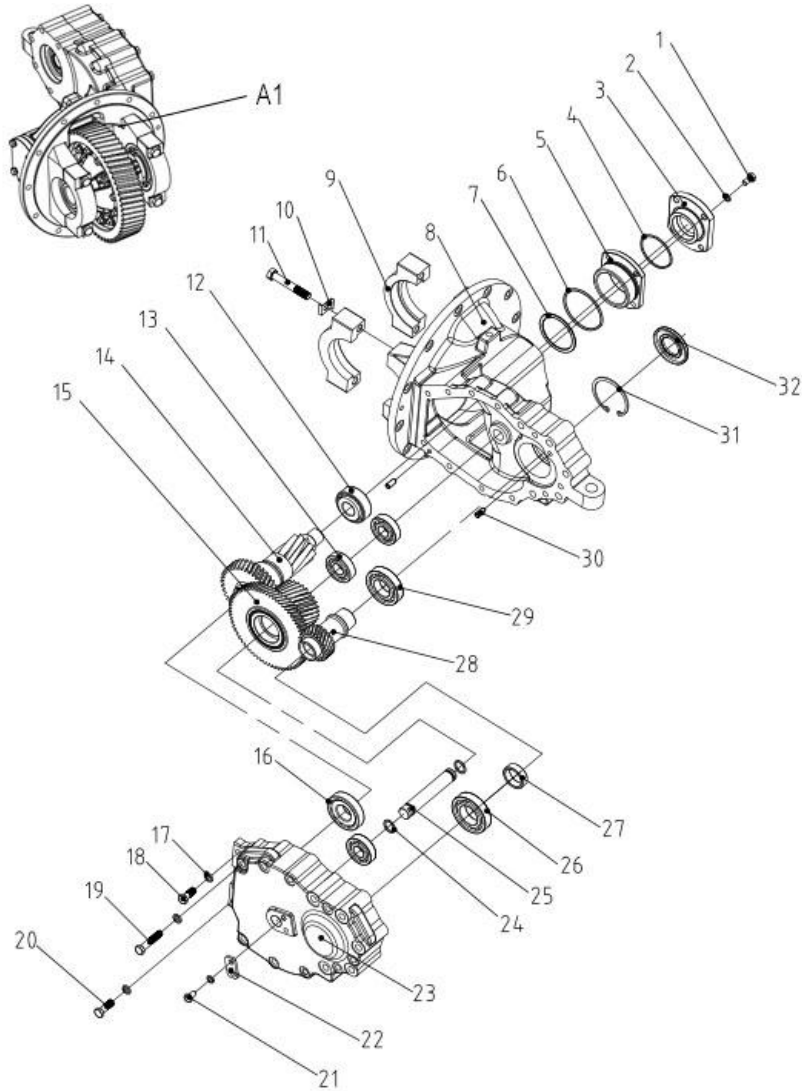
Item No	Part No.	Mark	Description	Req'd	Remarks: Serial No.
A1	FB-200-010-10		Gearbox	1	INC. 1~31
1	GB/T 5783		Bolt M10*35	4	
2	GB/T 93		Spring gasket 10	6	
3	HDCS30-01004		BearingcoverII	1	
4	GB/T 1235		O-ing 75*3.1	1	
5	HDCS20-01006		Bearing cover I	1	
6	GB/T 1235		O-ing 80*3.1	1	
7	GB/T 276		Tapered roller bearing33206/P6		
8	HDCS20-04002		Bush	1	
9	HDCS20-01001-2		Box	2	
10	YQX25-01002		Bearing seat	2	
11	YQX25-01008		Bearing seat locking plate	4	
12	Y30H-01010		Bearing block lock plate bearing block bolt	4	
13	GB/T 276		Deep groove ball bearing 6305	3	
14	HDCS20-04001		Gear	1	
15	HDCS20-03003-1		Dual gear	1	
16	HDCS20-01004		Oil seal 40*80*12	1	
17	GB/T 893.1		Cylindrical pin circlip 80	1	
18	GB/T 119.1		Pin A10*22	2	
19	GB/T 276		Deep groove ball bearin 6208	1	

FIG.9 LIST OF PARTS FOR ELECTRIC FORKLIFT TRANSMISSION (3T-3.5t) 1/2



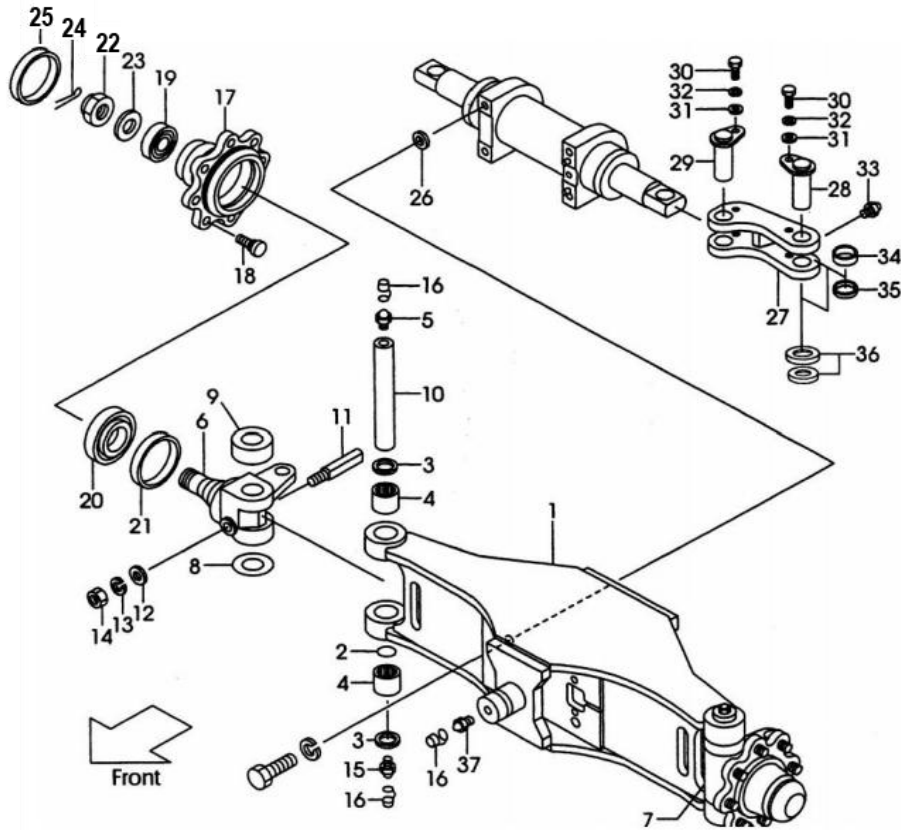
Item No	Part No.	Mark	Description	Req'd	Remarks: Serial No.
A1	BSX-HDCS35A		Gearbox	1	INC. 1~32
1	GB/T 5782		Bolt M10*40	4	
2	GB/T 93		Spring gasket 10	6	
3	HDCS30-01004		Bearing cover II	1	
4	GB/T 3452.1		Type O circle73*2.65	1	
5	HDCS30-01003		Bearing cover I	1	
6	GB/T 3452.1		Type O circle 85*2.65	1	
7	Y30H-09002		Gasket	N	
8	HDCS30-01001-1		Enclosure	1	
9	Y30H-01002		Bearing	2	
10	Y30H-01008		Bearing seat lock plate	4	
11	Y30H-01010		Bearing seat bolt	4	
12	GB/T 297		Tapered roller bearing	1	
13	GB/T 276		Deep groove ball bearing 6305	3	
14	HDCS30-04001		Gear shaft	1	
15	HDCS20-03003-1		Duplex gear	1	
16	GB/T 297		Tapered roller bearing color30307	1	
17	GB/T 93		Spring gasket12	11	
18	GB/T 5786		Bolt M12*1.25*30	1	
19	GB/T 5785		Bolt M12*1.25*100	9	

FIG.9 LIST OF PARTS FOR ELECTRIC FORKLIFT TRANSMISSION (3T-3.5t) 2/2



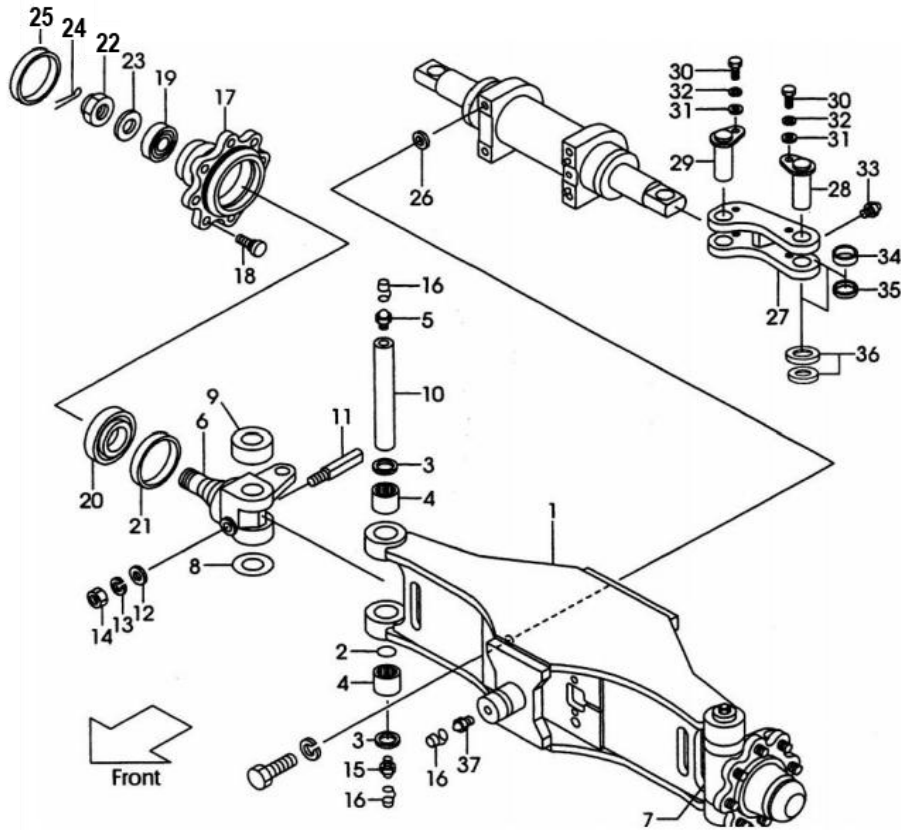
Item No	Part No.	Mark	Description	Req'd	Remarks: Serial No.
20	GB/T 5786		Bolt M12*1.25*40	1	
21	GB/T 5783		Bolt M10*16	2	
22	HDCS20-03001		Baffle	1	
23	HDCS30-01002		Lid	1	
24	GB/T 1235		Type O circle25*2.4	1	
25	HDCS20-03002		Shaft	2	
26	GB/T 276		Deep groove ball bearing 6209	1	
27	HDCS25-02002		Sealing cover	1	
28	HDCS30-02001-2		Input shaft	1	
29	GB/T 276		Deep groove ball bearing 6208	1	
30	GB/T 119.1		Cylindrical pin A10*22	1	
31	GB/T 893.1		Elastic retaining ring for hole 80	2	
32	HDCS30-01005		NOC 40*80*7	1	

FIG.12 STEERING AXLE ASSY (2T-2.5T) 1/2



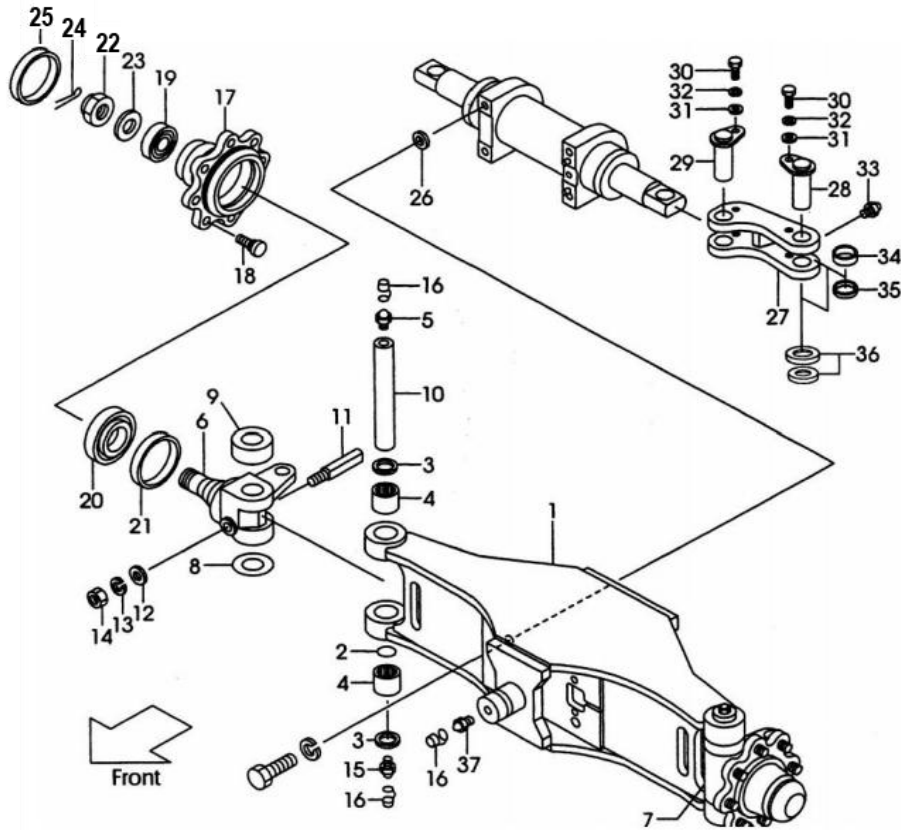
Item No	Part No.	Mark	Description	Req'd	Remarks: Serial No.
A1	FB-200-020-10		Steering axle ASSY	1	INC. 1~37
1	HC277R4-30111A		Axle housing	1	
2	23654-32161		O-Ring	2	
3	HC23654-32081A		Dust seal	2	
4	03146-13201		Needle bearing	2	
5	04901-00190		Fitting	2	
6	HC277R4-32101		Knuckle, RH	1	
7	HC277R4-32111		Knuckle, LH	1	
8	22214-30321		Shim	2	
9	03126-83201		Ball bearing	2	
10	24454-32232		King pin	2	
11	20314-30161		Lock pon	2	
12	02000-00010		Washer	2	
13	02010-00010		Washer	2	
14	01400-00010		Nut	2	
15	04901-00191		Fitting	2	
16	22199-12401A		Cap	4	
17	27414-32031		Hub	2	
18	23654-32041		Hub Bolt	12	
19	03071-30206		Bearing	2	

FIG.12 STEERING AXLE ASSY (2T-2.5T) 2/2



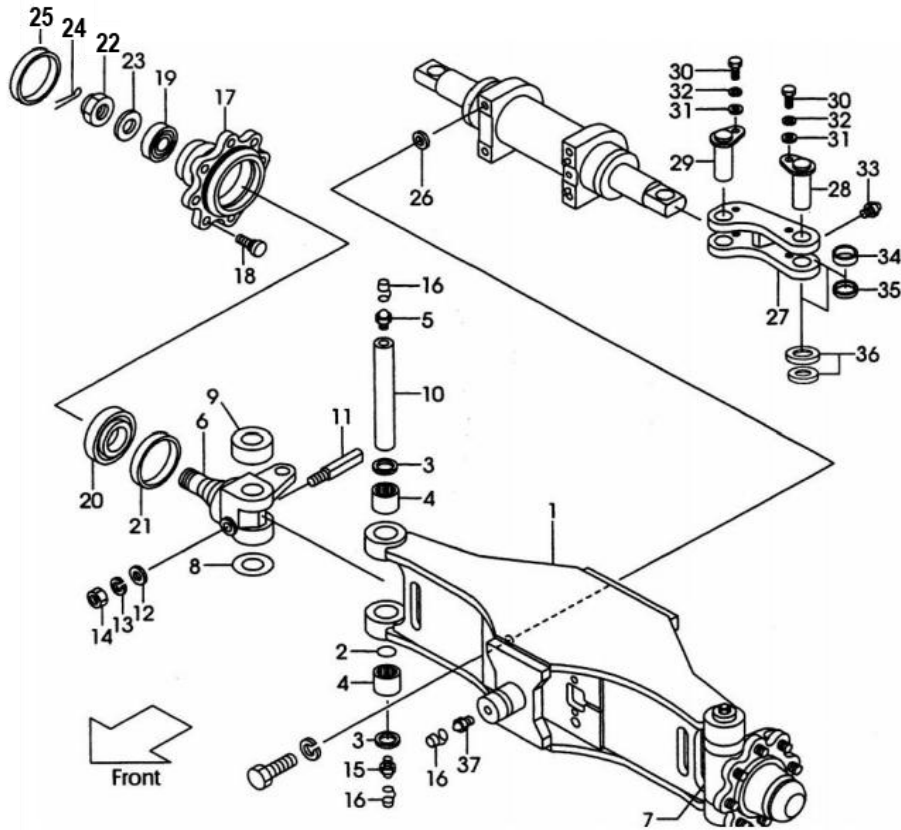
Item No	Part No.	Mark	Description	Req'd	Remarks: Serial No.
20	23453-02071		Bearing	2	
21	01412-00030		Oil seal	2	
22	01412-00030		Nut	2	
23	02000-00030		Washer	2	
24	02200-06055		Pin	2	
25	22194-32361		Hub Cap	2	
26	514A2-42481		Shim	1	
27	HC277R4-32001A		Yoke	2	
28	HC514A2-42721		Pin	2	
29	HC533A2-42101		Pin	2	
30	01103-08012		Bolt	4	
31	02000-00008		Washer	4	
32	272A8-52101		Washer	4	
33	214A8-52051		Nipple	2	
34	215E4-52301		Collar	2	
35	215E4-52231		Joint	2	
36	04901-00190		Nipple	2	
37	04901-00190		Nipple	2	

FIG.13 STEERING AXLE ASSY (3T-3.5T) 1/2



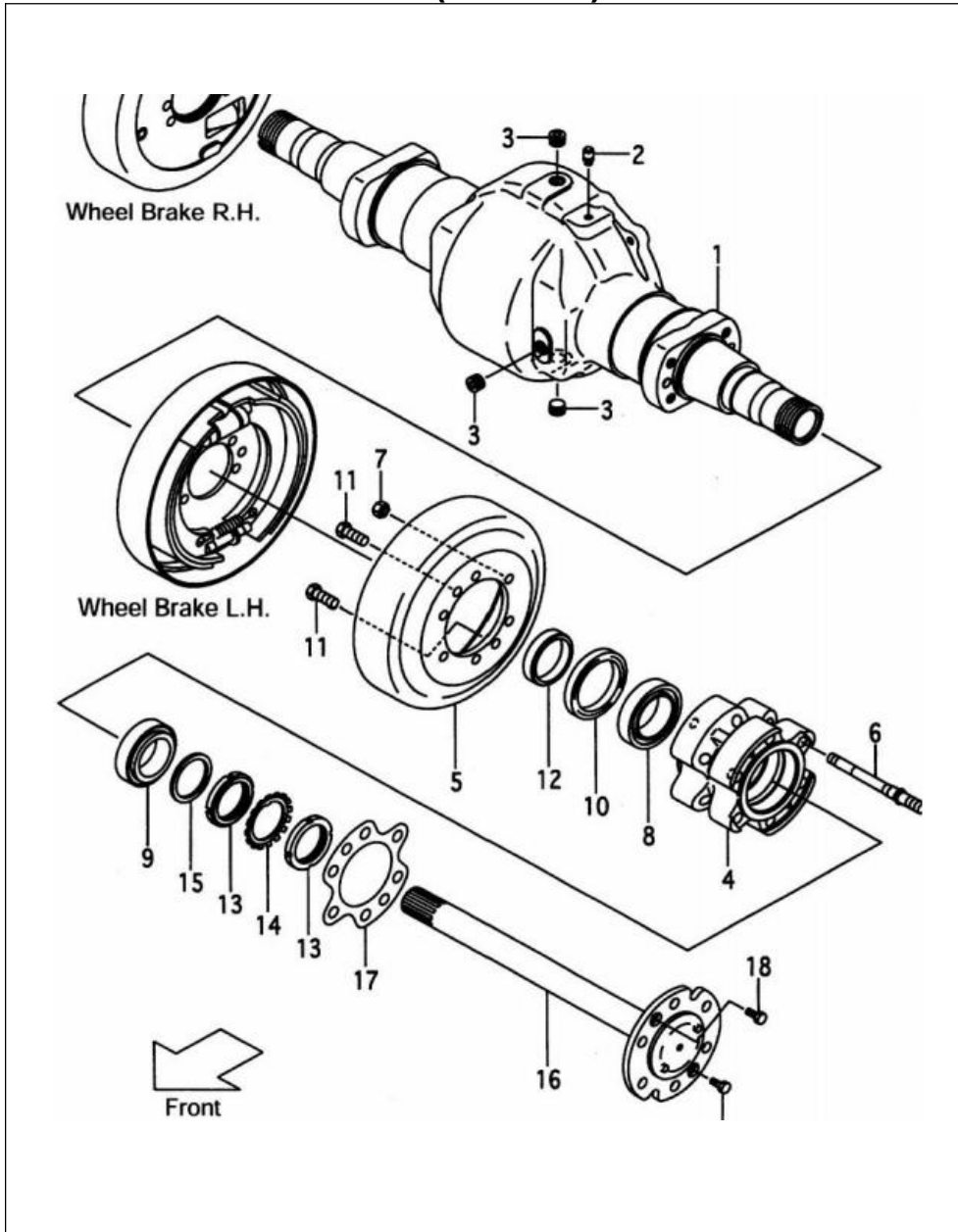
Item No	Part No.	Mark	Description	Req'd	Remarks: Serial No.
A1	FB-200-021-10		Steering axle ASSY	1	INC. 1~37
1	HC277R4-30111B		Axle housing	1	
2	23654-33161		O-Ring	2	
3	HC23654-32081B		Dust seal	2	
4	03146-14201		Needle bearing	2	
5	04901-01190		Fitting	2	
6	HC277R4-33101		Knuckle, RH	1	
7	HC277R4-33111		Knuckle, LH	1	
8	22214-31321		Shim	2	
9	03126-84201		Ball bearing	2	
10	24454-33232		King pin	2	
11	20314-31161		Lock pin	2	
12	02000-01010		Washer	2	
13	02010-01010		Washer	2	
14	01400-01010		Nut	2	
15	04901-01191		Fitting	2	
16	22199-12401B		Cap	4	
17	27414-33031		Hub	2	
18	23654-33041		Hub Bolt	12	
19	03071-31206		Bearing	2	

FIG.13 STEERING AXLE ASSY (3T-3.5T) 2/2



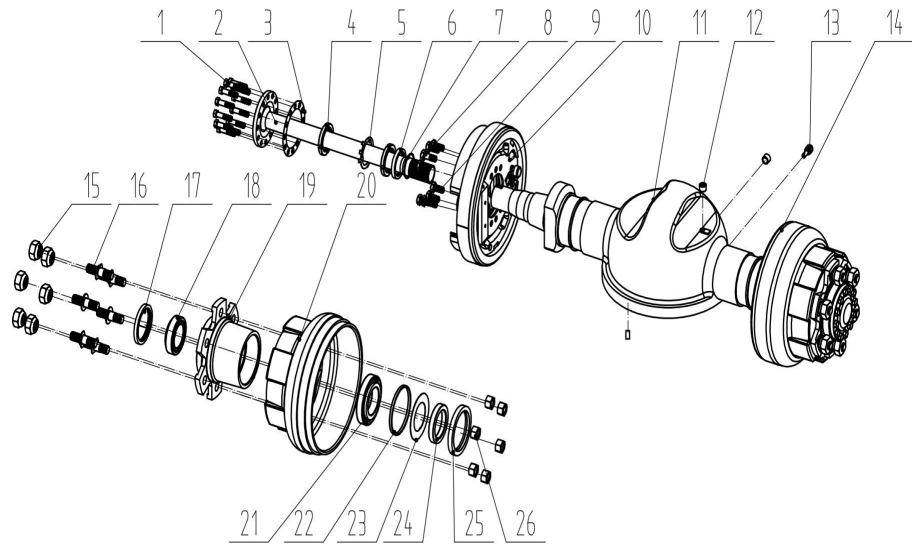
Item No	Part No.	Mark	Description	Req'd	Remarks: Serial No.
20	23453-03071		Bearing	2	
21	01412-01030		Oil seal	2	
22	01412-01030		Nut	2	
23	02000-01030		Washer	2	
24	02200-07055		Pin	2	
25	22194-33361		Hub Cap	2	
26	514A2-43481		Shim	1	
27	HC277R4-32001B		Yoke	2	
28	HC514A2-43721		Pin	2	
29	HC533A2-43101		Pin	2	
30	01103-09012		Bolt	4	
31	02000-01008		Washer	4	
32	272A8-53101		Washer	4	
33	214A8-53051		Nipple	2	
34	215E4-53301		Collar	2	
35	215E4-53231		Joint	2	
36	04901-00190		Nipple	2	
37	04901-01190		Nipple	2	

FIG.14 DRIVE AXLE (2T-2.5T)



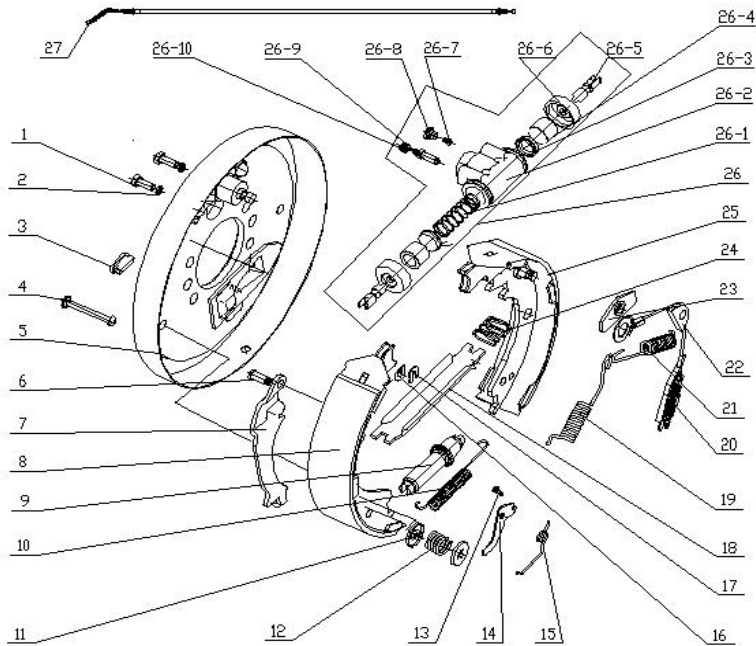
Item No	Part No.	Mark	Description	Req'd	Remarks: Serial No.
A1	Q02A2-20000B		Drive axle ASSY	1	INC. 1~18
1	277P3-02002B		Axle housing	1	
2	15573-42151		Air ventilation	1	
3	22193-03001		Plug	3	
4	27413-02011		Hub	2	
5	277P3-02041A		Brake	2	
6	27413-02031B		Hub Bolt	12	
7	27413-02061		Nut	12	
8	03071-33013		Bearing	2	
9	23453-02071A		Bearing	2	
10	24843-02051		Oil Seal	2	
11	27413-02081		Bolt	4	
12	24843-02071A		Retainer	2	
13	03192-00012		Nut	4	
14	03192-10012		Lock	2	
15	23453-02091A		Washer	2	
16	277H3-02151B		Shaft	2	
17	27413-02051		Gasket	2	
18	01100-08020		Bolt	4	

FIG.15 DRIVE AXLE (3T-3.5T) 1/2



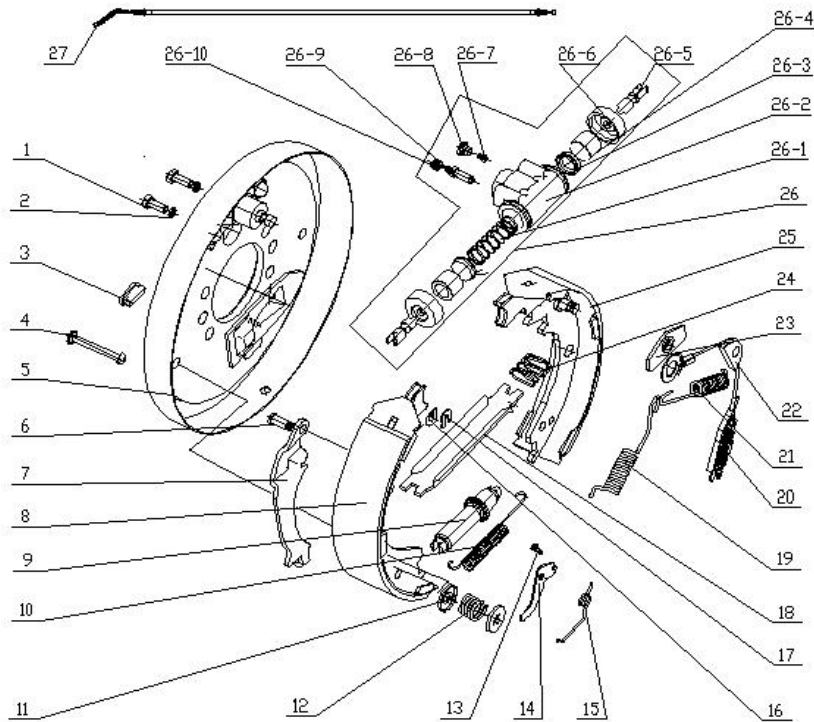
Item No	Part No.	Mark	Description	Req'd	Remarks: Serial No.
A1	H24N4-30002		Driver axle	1	INC. 1~26
1	24453-02061B		Bolt	24	
2	A22J3-02011		Shaft	2	
3	A22A3-02031		Seal gasket	2	
4	25555-00004		Bolt M58*2	4	
5	25555-00006		Washer	2	
6	25555-00007		Bushing Ø60*Ø75*10	2	
7	25555-00008		O ring Ø59.6*Ø2.4	2	
8	25953-72001		Bolt	4	
9	A22A3-02051		Bolt	12	
10	AQ-Q03E5-1520R		Brake ASSY, RH	1	
11	A22J3-02021A		Axle Housing	1	
12	22193-03001		Block	3	
13	90106-65690		Air vent	1	
14	24433-70411		Brake ASSY, LH	1	
15	23913-02041B		Nut	12	
16	25303-02102B		Bolt	12	
17	25555-00009		Seal Ø75*Ø100*10	2	
18	Z-33012		Bearing 33012	2	
19	25555-00003		Hub	2	

FIG.16 BRAKE ASSEMBLY, LH (2-2.5T) 1/2



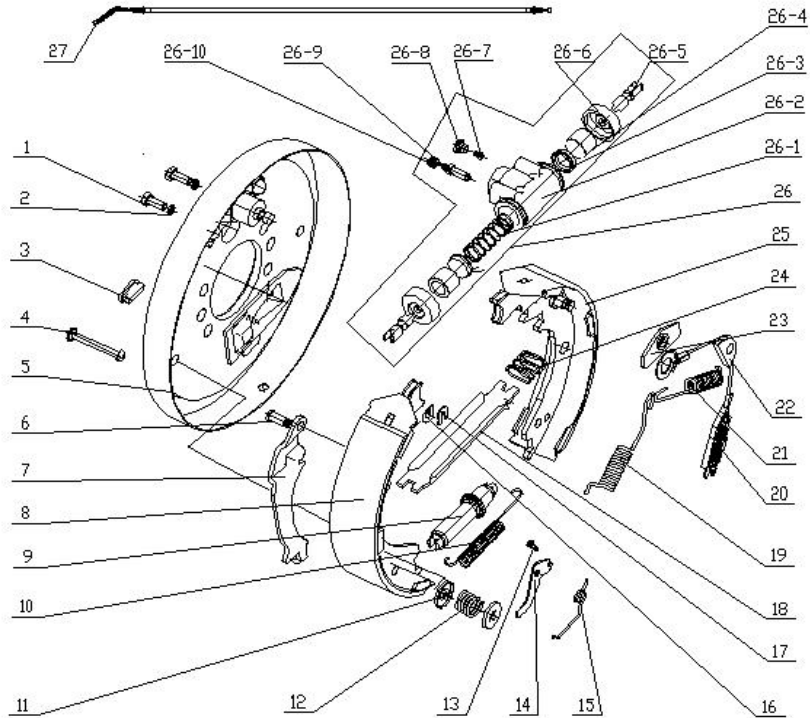
Item No	Part No.	Mark	Description	Req'd	Remarks: Serial No.
A1	Q02A2L-1200L		Brake Assembly,LH		
1	Q150B0820		Bolt		
2	Q40308		Spring washer		
3	24433-70040G		Block		
4	FH28056-009		Compression spring tie rod		
5	FH28056-011L-ZH		Brake base plate assembly, LH		
6	FH28056-004		Hand lever pin		
7	FH28056-007L		Hand brake lever, LH		
8	FH28056-020		Brake shoe with friction plate assembly		
9	FH28056-040L		Gap adjuster assembly, LH		
10	FH28056-003		Tension spring		
11	24433-70020G		Compression spring seat		
12	24433-70030G		Compression spring		
13	FH28056-006		Torsion spring pin		
14	21233-70340G		Pawl		
15	21233-70360G-L		Torsion spring, LH		
16	24433-70160G		Spring washer		
17	24433-70170G		Rod pin retaining ring		
18	FH28056-008L		Hand brake push rod, LH		
19	FH28056-001L		Return spring, front, LH		

FIG.16 BRAKE ASSEMBLY, LH (2-2.5T) 2/2



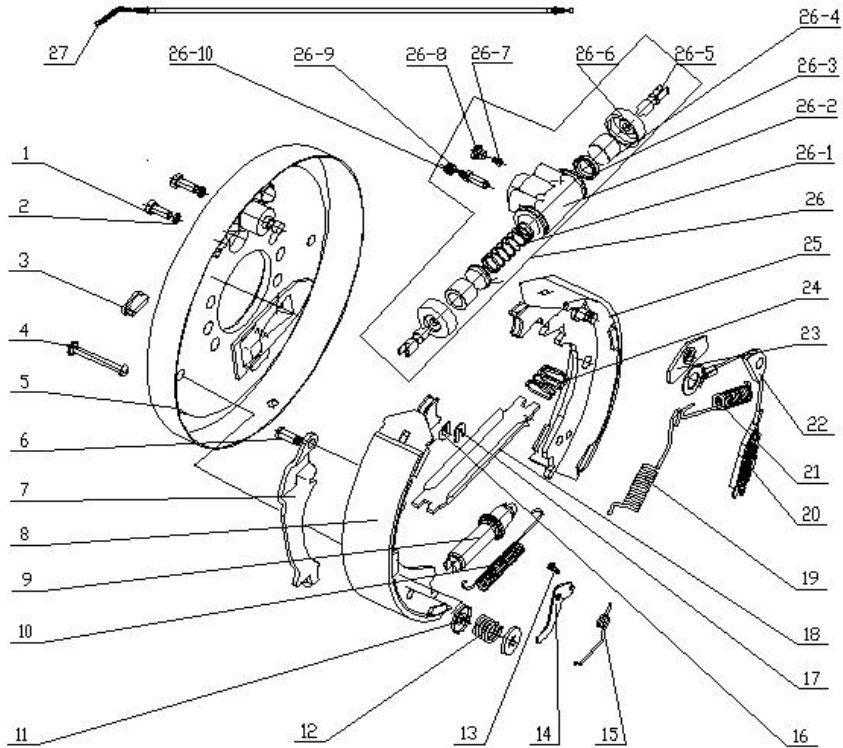
Item No	Part No.	Mark	Description	Req'd	Remarks: Serial No.
20	FH28056-050		Spring cable device		
21	FH28056-002L		Return spring, rear, LH		
22	24433-70081G		Guide block		
23	24433-70060G		Guide plate		
24	24433-70130G		Spring		
25	FH28056-021L		Brake shoe with friction plate and spring pin		
26	FH28056-030		Wheel cylinder assembly, LH		
26-1	FH28056		Spring		
26-2	FH28056-031		Cylinder body		
26-3	FH28056-033		Cup		
26-4	FH28056-032		Piston		
26-5	FH28056-036		Piston rod		
26-6	FH28056-035		Boot		
26-7	FH28056-037		Oil plug		
26-8	FH28056-038		Thread plug		
26-9	24433-76090G		Air vent screw		
26-10	24433-76100G		Air vent screw cap		
27	FH28056-1200A41		Brake cable assembly, LH		

FIG.17 BRAKE ASSY, RH (2-2.5T) 1/2



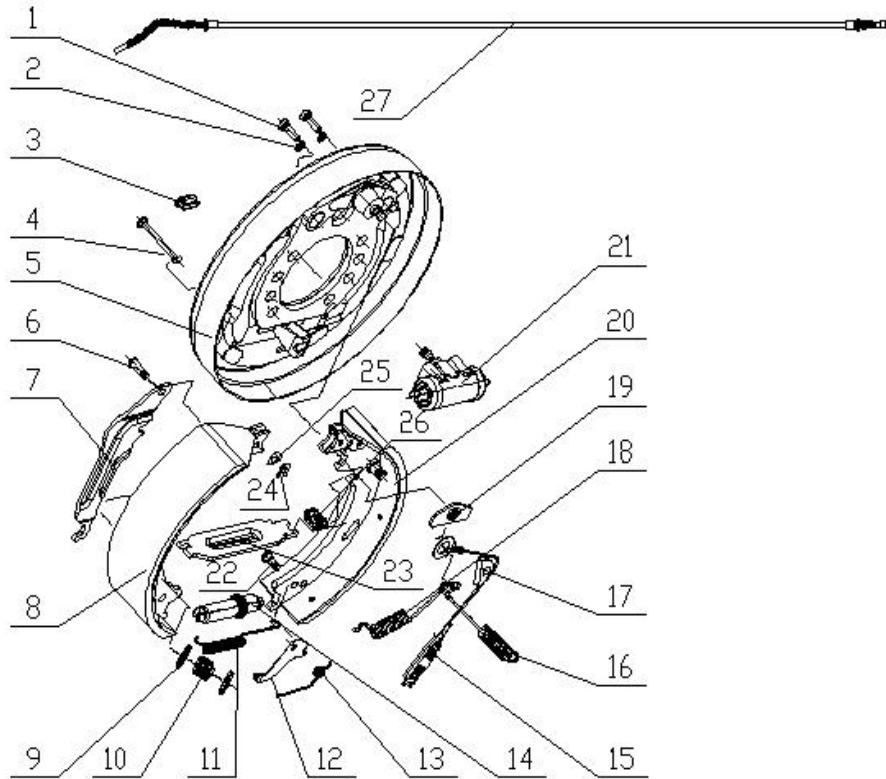
Item No	Part No.	Mark	Description	Req'd	Remarks: Serial No.
A1	Q02A2-1650R		Brake Assembly,RH		
1	Q150B0820		Bolt		
2	Q40308		Spring washer		
3	24433-70040G		Block		
4	FH28056-009		Compression spring tie rod		
5	FH28056-011R-ZH		Brake base plate assembly, RH		
6	FH28056-004		Hand lever pin		
7	FH28056-007R		Hand brake lever, RH		
8	FH28056-020		Brake shoe with friction plate assembly		
9	FH28056-040R		Gap adjuster assembly, LH		
10	FH28056-003		Tension spring		
11	24433-70020G		Compression spring seat		
12	24433-70030G		Compression spring		
13	FH28056-006		Torsion spring pin		
14	21233-70340G		Pawl		
15	21233-70360G-R		Torsion spring, RH		
16	24433-70160G		Spring washer		
17	24433-70170G		Rod pin retaining ring		
18	FH28056-008R		Hand brake push rod, RH		
19	FH28056-001R		Return spring, front, RH		

FIG.17 BRAKE ASSY, RH (2-2.5T) 2/2



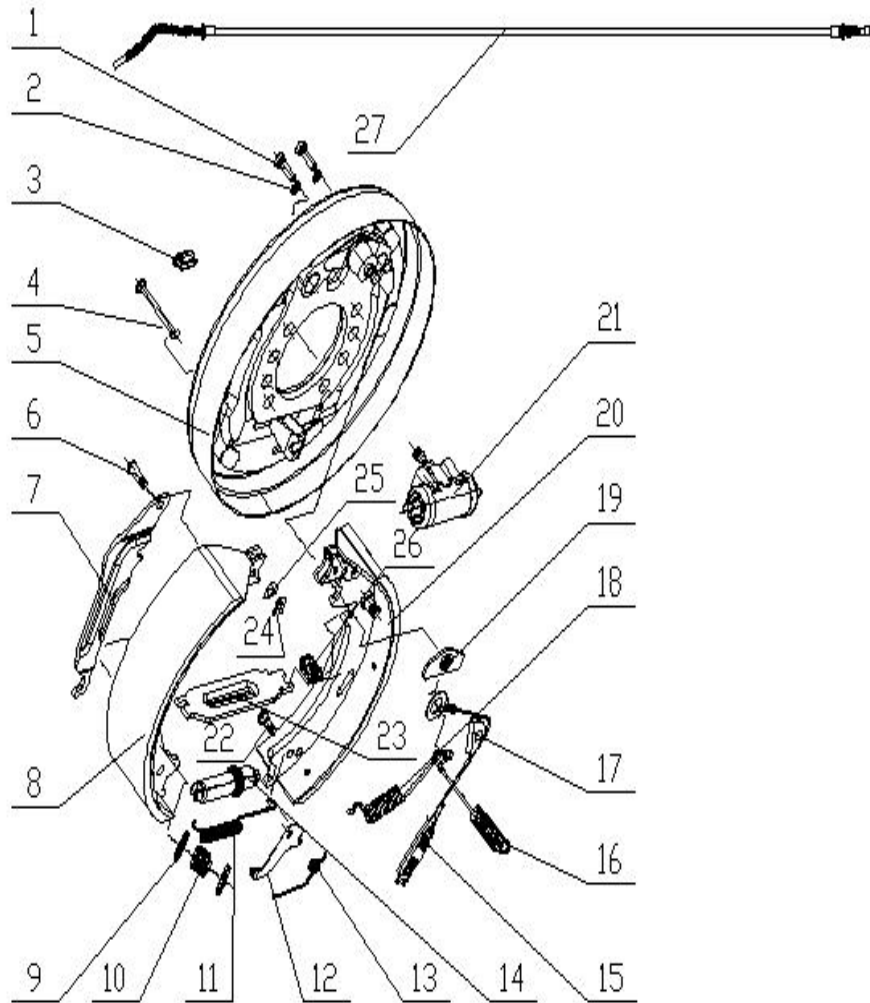
Item No	Part No.	Mark	Description	Req'd	Remarks: Serial No.
20	FH28056-050		Spring cable device		
21	FH28056-002R		Return spring, rear, RH		
22	24433-70081G		Guide block		
23	24433-70060G		Guide plate		
24	24433-70130G		Spring		
25	FH28056-021R		Brake shoe with friction plate and spring pin		
26	FH28056-030		Wheel cylinder assembly, RH		
26-1	FH28056		Spring		
26-2	FH28056-031		Cylinder body		
26-3	FH28056-033		Cup		
26-4	FH28056-032		Piston		
26-5	FH28056-036		Piston rod		
26-6	FH28056-035		Boot		
26-7	FH28056-037		Oil plug		
26-8	FH28056-038		Thread plug		
26-9	24433-76090G		Air vent screw		
26-10	24433-76100G		Air vent screw cap		
27	FH28056-1650A41		Brake cable assembly, RH		

FIG.18 BRAKE ASSY, LH (3-3.5T) 1/2



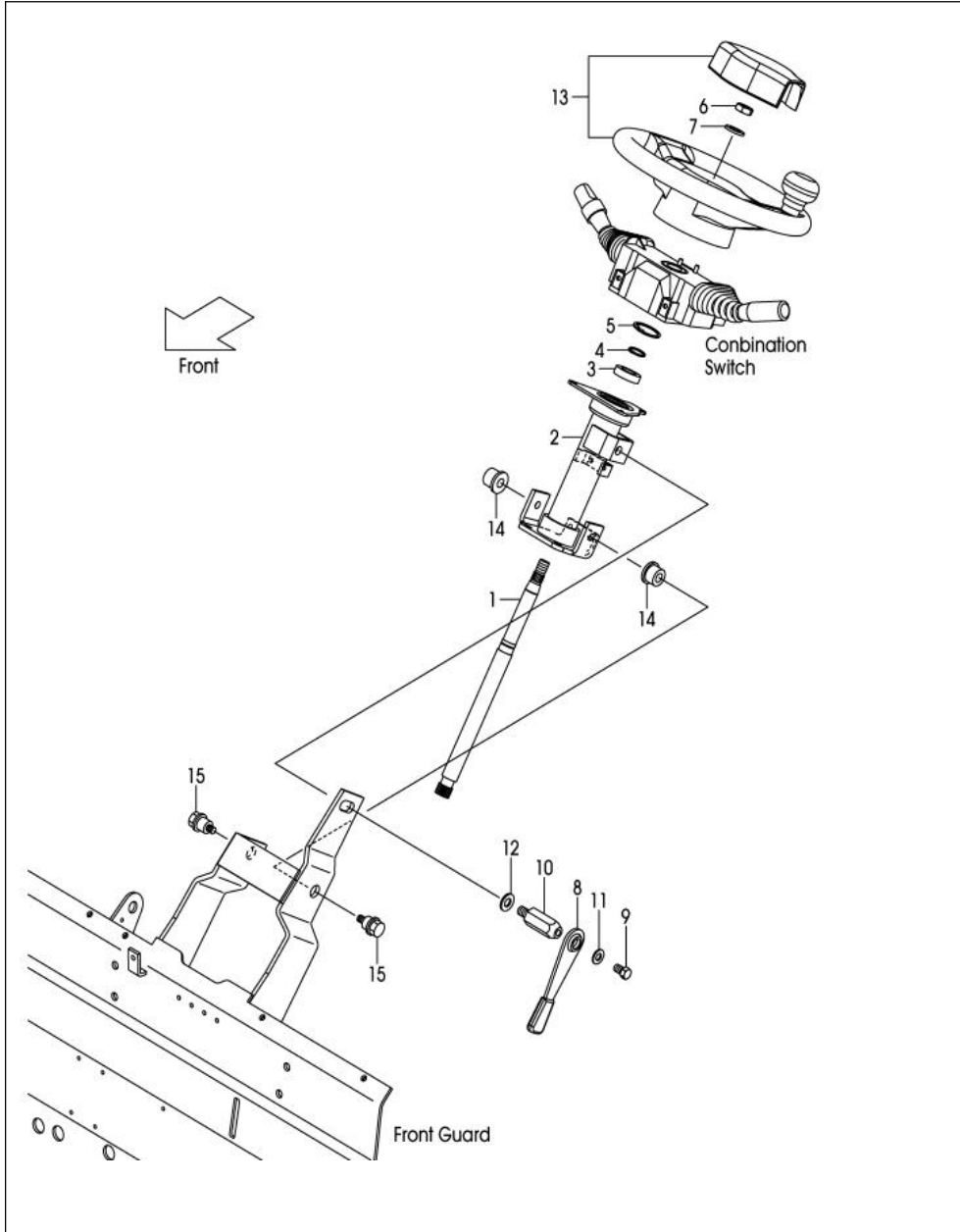
Item No	Part No.	Mark	Description	Req'd	Remarks: Serial No.
A1	24433-70411		Brake ASSY, LH	1	INC.1~26
1	GB21-76		Bolt M8*1.25*25-6g	2	
2	GB91-76		Spring washer	2	
3	24433-70040G		Plug	1	
4	24433-70010G		Compression spring tie rod	2	
5	24433-72000G-L		Brake base plate ASSY, LH	1	
6	24433-70150G		Lever pin	1	
7	24433-70140G-L		Brake lever, LH	1	
8	24433-75000G		Brake shoe	1	
9	24433-70020G		Compression spring cup	4	
10	24433-70030G		Compression spring	2	
11	24433-70050G		Tension spring	1	
12	24433-70100G-L		Pawl, LH	1	
13	24433-70090G-L		Torsion spring, LH	1	
14	24433-74000G-L		Gap adjuster ASSY, LH	1	
15	24433-73000G		Spring cable device	1	
16	24433-70071G-L		Return spring, rear, LH	1	
17	24433-70081G		Guide block	1	
18	24433-70070G-L		Return spring, RH	1	
19	24433-70060G		Guide plate	1	

FIG.19 BRAKE ASSY, RH (3-3.5T) 1/2



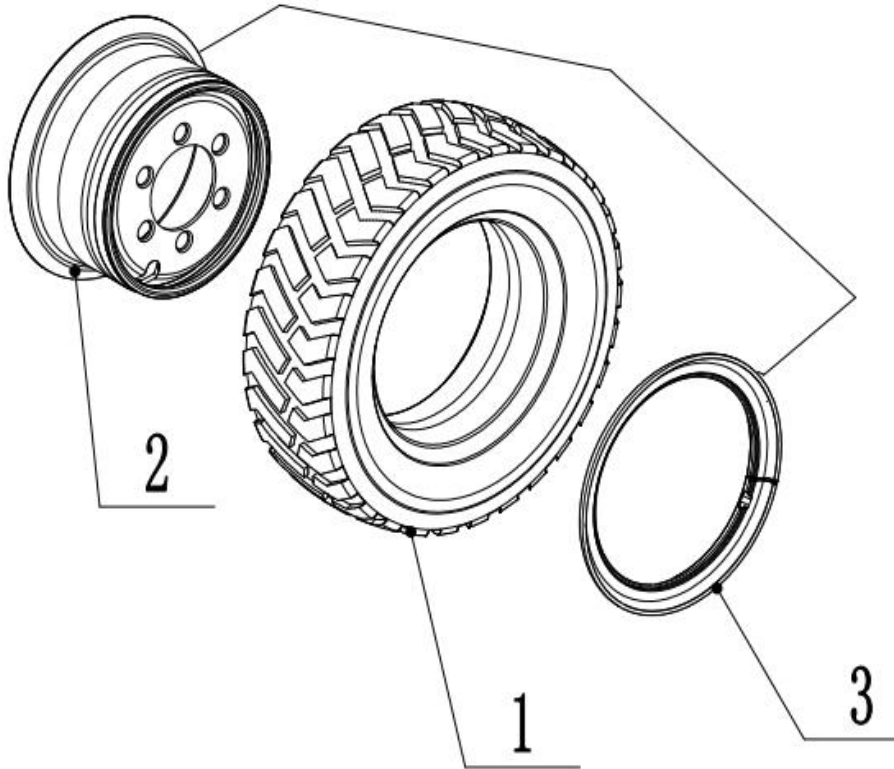
Item No	Part No.	Mark	Description	Req'd	Remarks: Serial No.
A1	AQ-Q03E5-1520R		Brake ASSY, RH	1	INC. 1~26
1	GB21-76		Bolt, M8*1.25*25-6g	2	
2	GB91-76		Spring washer	2	
3	24433-70040G		Plug	1	
4	24433-70010G		Compression spring tie rod	2	
5	24433-72000G-R		Brake base plate ASSY, RH	1	
6	24433-70150G		Lever pin	1	
7	24433-70140G-R		Brake lever, RH	1	
8	24433-75000G		Brake shoe	1	
9	24433-70020G		Compression spring cup	4	
10	24433-70030G		Compression spring	2	
11	24433-70050G		Tension spring	1	
12	24433-70100G-R		Pawl, RH	1	
13	24433-70090G-R		Torsion spring, RH	1	
14	24433-74000G-R		Gap adjuster ASSY, RH	1	
15	24433-73000G		Spring cable device	1	
16	24433-70071G-R		Return spring, rear, RH	1	
17	24433-70081G		Guide block	1	
18	24433-70070G-R		Return spring, RH	1	
19	24433-70060G		Guide plate	1	

FIG.20 STEERING WHEEL UNIT



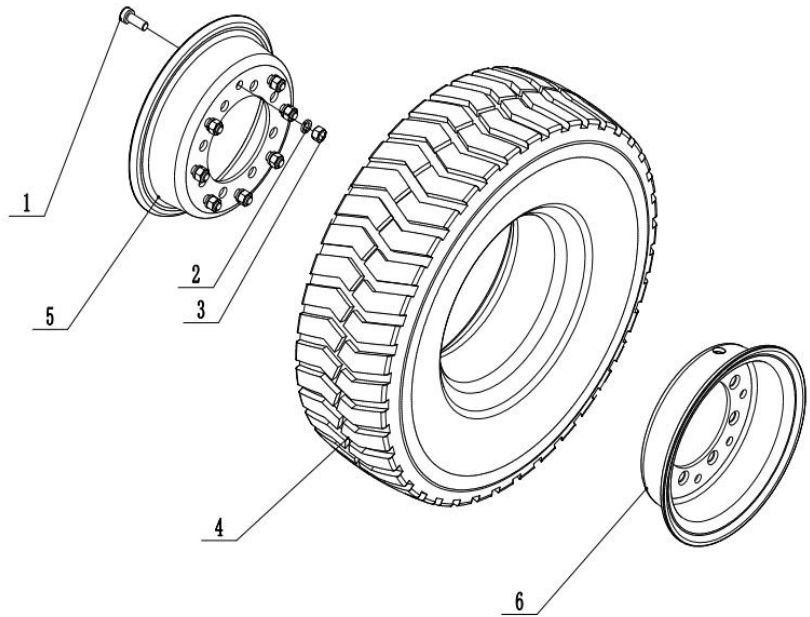
Item No	Part No.	Mark	Description	Req'd	Remarks: Serial No.
1	NO PART NO.	#	Steering shaft	1	
2	NO PART NO.	#	Steering column tube	1	
3	03024-06904		Ball bearing	1	
4	C91J4-12211		Snap ring	1	
5	02110-00037		Snap ring	1	
6	01402-10014		Nut	1	
7	02000-00014		Washer	1	
8	239A4-12411		Lever	1	
9	239A4-12441		Bolt	1	
10	239A4-12431		Lock Bolt	1	
11	214A4-12161		Washer	1	
12	02000-00012		Washer	1	
13	22N54-10201a		Steering Wheel	1	
14	WL-GB9316		Bushing M16	2	
15	C0F01-22301		Bolt	2	
1-5	249M4-10251		Steering column	1	
8-12	239A4-12402		Locking handle assembly	1	

FIG.26 FRONT WHEEL



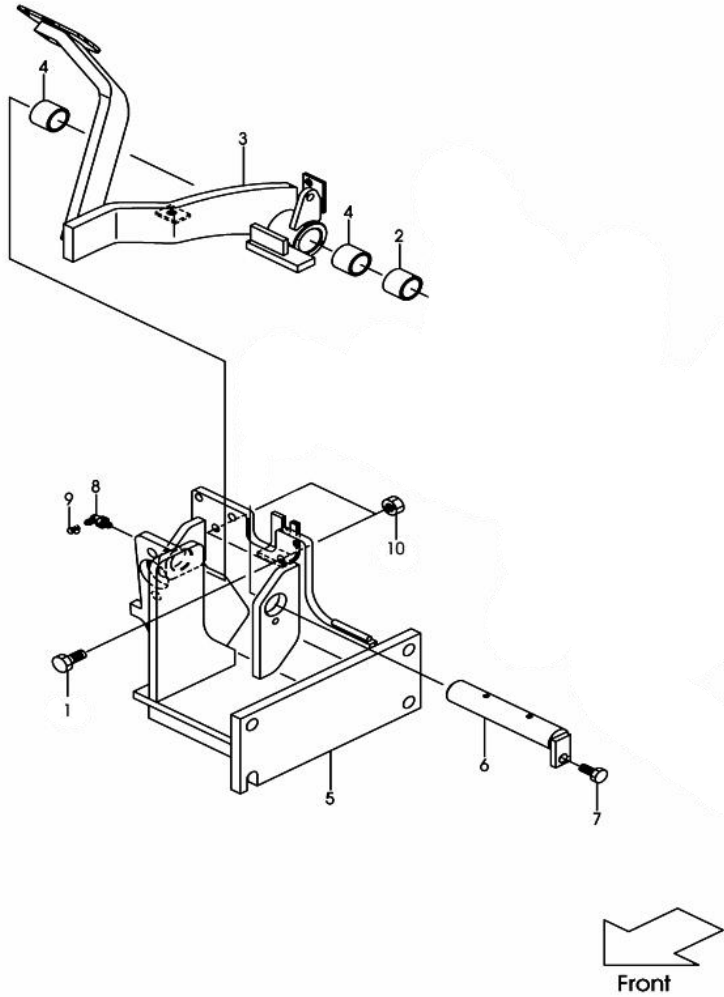
Item No	Part No.	Mark	Description	Req'd	Remarks: Serial No.
1	LT210822		Pneumatic tire, (2T-2.5T)	2	
	LT210823		Pneumatic tire, 12 (3T-3.5T)	2	
	LT210809		Solid tire, (2T-2.5T)	2	
	LT210824		Solid tire, (3T-3.5T)	2	
	LT210825		Cushion tire, (2T-2.5T)	2	
	LT210826		Cushion tire, (3T-3.5T)	2	
2-3	LW070015		Front rim (3T-3.5T)	2	
	LW05001200		Front rim (2T-2.5)	2	
2	NO PART NO.	#	Rim & Disk	2	
3	22439-44031		Side Ring	2	

FIG.27 REAR WHEEL



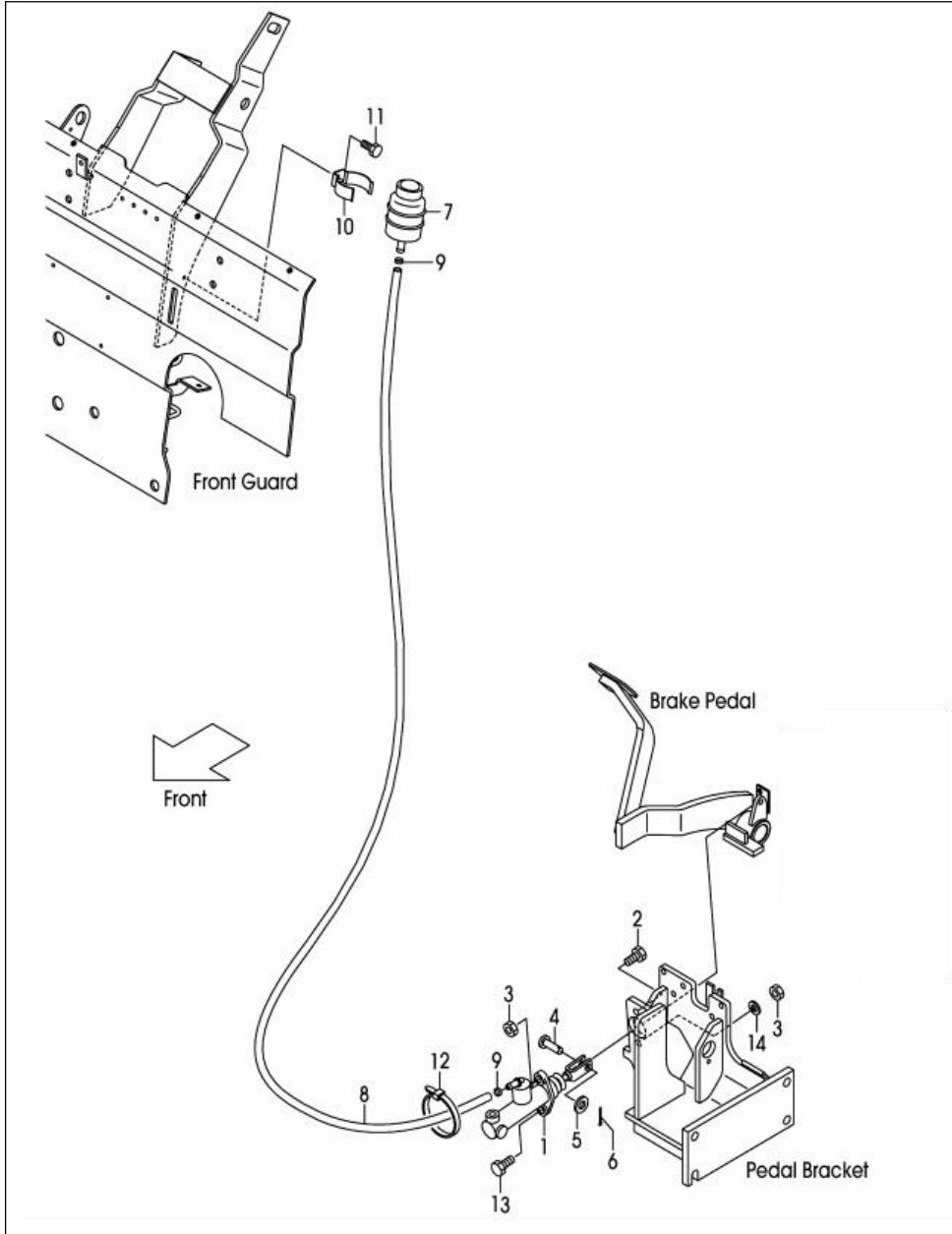
Item No	Part No.	Mark	Description	Req'd	Remarks: Serial No.
1	H24N4-32021		Bolt	16	
2	02011-00016		Washer	16	
3	01400-10016		Nut	16	
4	LT-180720		Pneumatic tire, (2T-2.5T)	2	
	LT-180721		Pneumatic tire, (3T-3.5T)	2	
	LT-180708		Solid tire, (2T-2.5T)	2	
	LT-180722		Solid tire, (3T-3.5T)	2	
	LT-180723		Cushion tire, (2T-2.5T)	2	
	LT-180724		Cushion tire, (3T-3.5T)		
5-6	LW050010		Rear rim (2T-2.5T)	2	
	LW050110		Rear rim (3T-3.5T)		
5	NO PART NO.		Rim & Disk	2	
6	NO PART NO.		Rim & Disk	2	

FIG.29 FOOT PEDAL



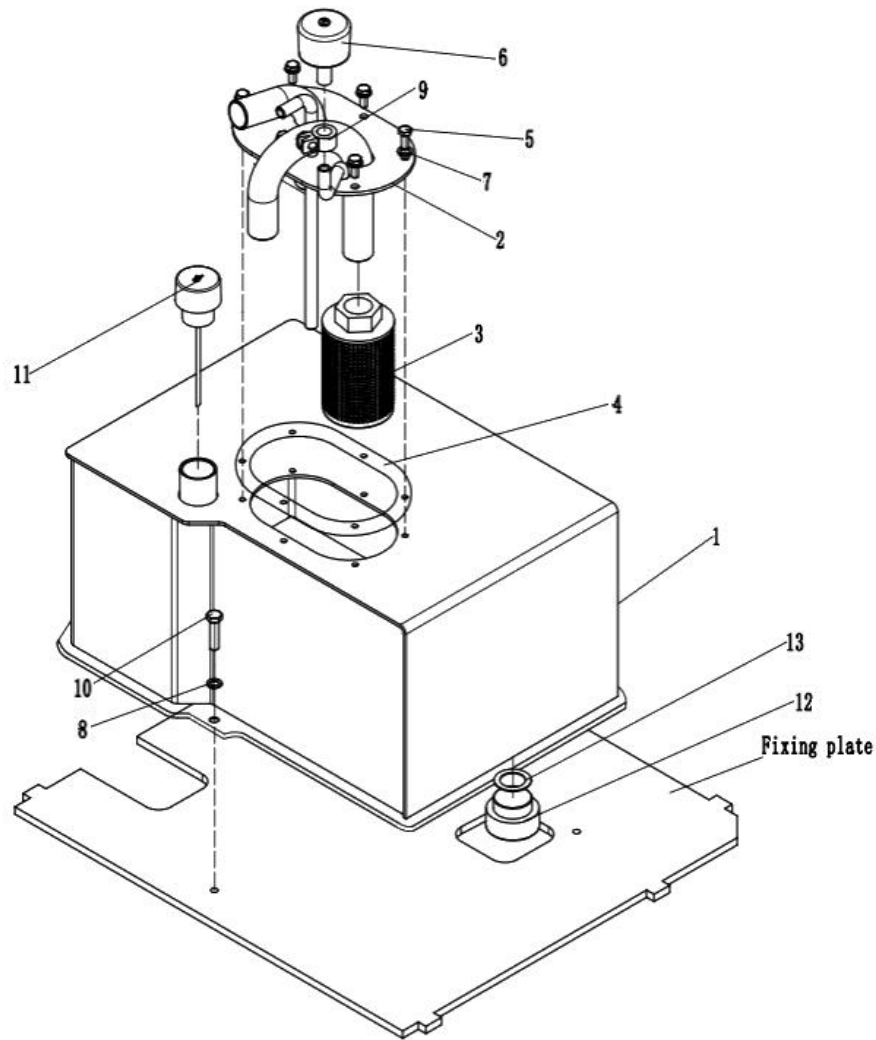
Item No	Part No.	Mark	Description	Req'd	Remarks: Serial No.
1	01100-10025		Bolt	2	
2	23655-42421		Pedal Bushing	2	
A2	22N55-40303		Brake pedal assembly	1	INC. 3~4
3	NO PART NO.	#	Brake pedal	1	
4	23655-42421		Pedal Bushing	2	
5	2CK55-40201		Pedal Bushing	1	
6	22N55-42101		Shaft	1	
7	01183-08016		Bolt	1	
8	04901-00190		Fitting	1	
9	22199-12401		Nipple cap	1	
10	01400-00010		Nut	1	
1-10	22N56-42911ZC		Foot pedal assembly	1	

FIG.30 FOOT PEDAL CYLINDER



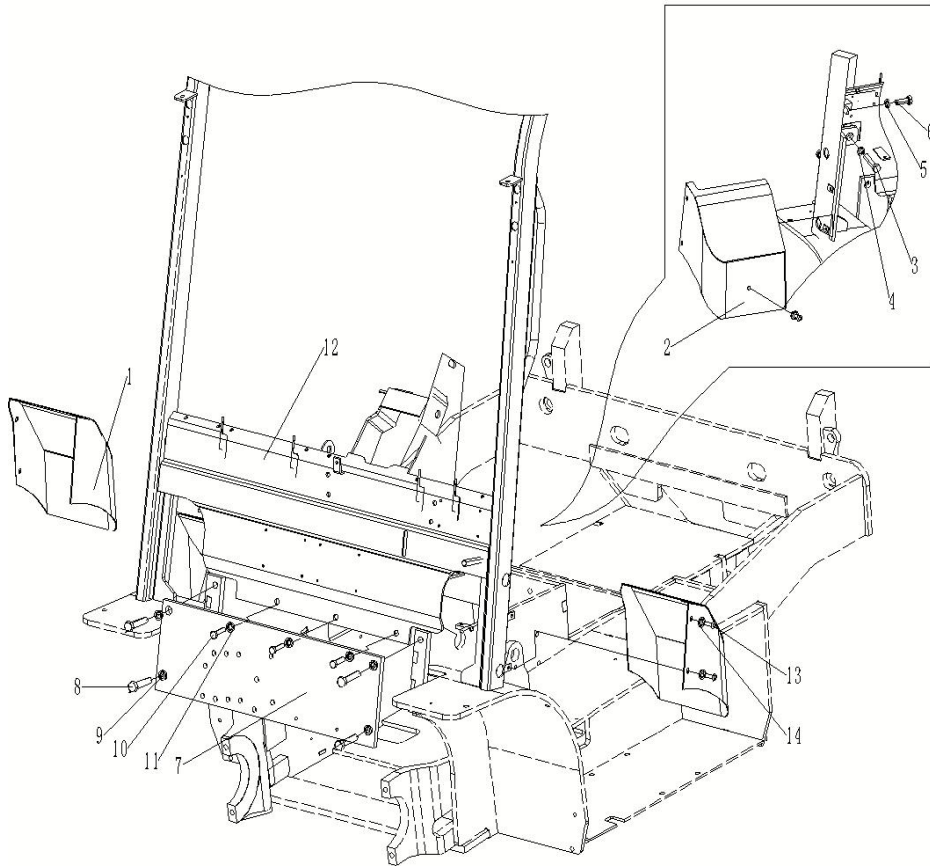
Item No	Part No.	Mark	Description	Req'd	Remarks: Serial No.
1	CT27045-40302		Master Cylinder	1	
2	01184-10030		Bolt	1	
3	01400-00010		Nut	2	
4	02262-08025		Clevis pin	1	
5	02000-00008		Washer	1	
6	02200-02020		Cotter pin	1	
7	CT23775-42101		Tank	1	
8	22655-42591		Hose	1	
9	25595-42491		Band	2	
10	224G5-42061		Hose Clip	1	
11	01183-06010		Bolt Ø5X20	1	
12	04913-11100		Band	1	
13	01100-10030		Bolt	1	
14	02010-00010		Washer	1	

FIG.33 OIL TANK



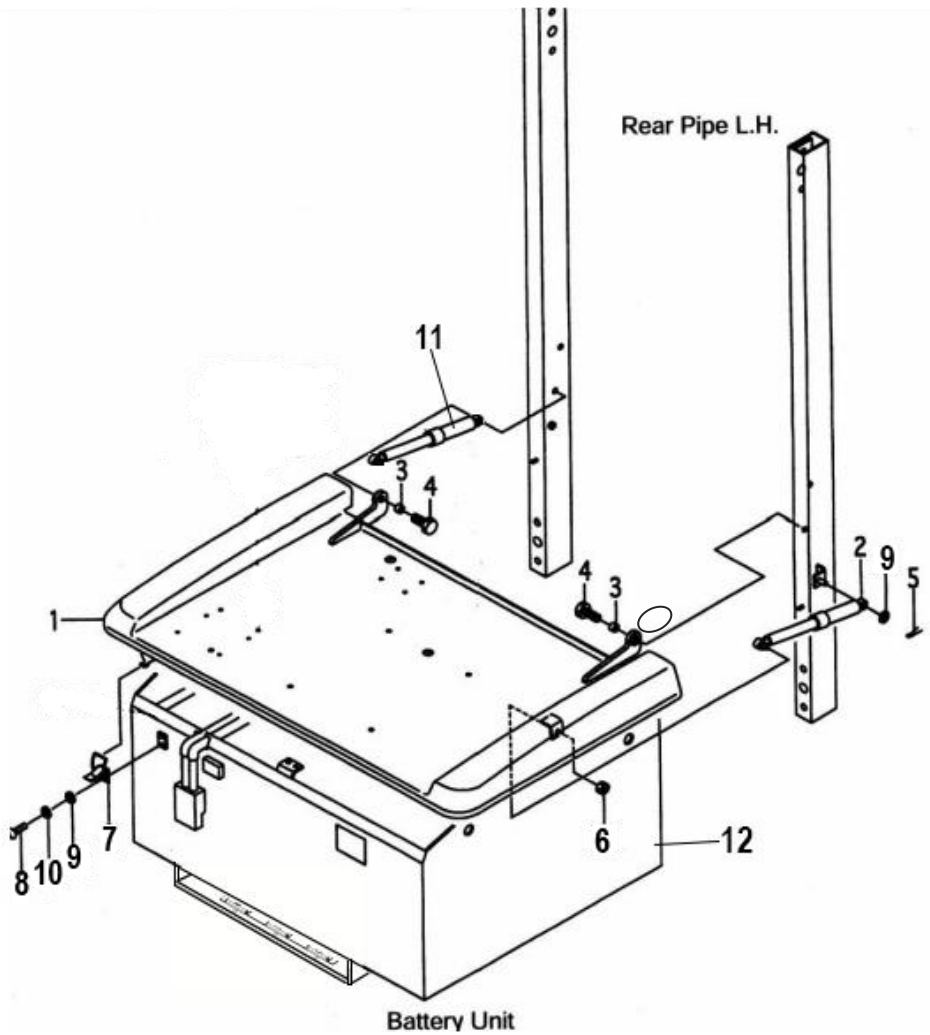
Item No	Part No.	Mark	Description	Req'd	Remarks: Serial No.
1	C73E7-60102		Tank oil	1	
2	C73E7-60111		Top plate	1	
3	FB-400-010-10		Fii ter suction	1	
4	C73E7-62555		Packing	1	
5	HC229F2-22151		Bolt 8*20	6	
6	216G7-52201		Cap breather	1	
7	90-093-008-00		Spring washerD8	6	
8	90-093-010-00		Spring washerD10	3	
9	04911-00020		Clip	1	
10	HC229F2-22155		Bolt 10*20	3	
11	277H7-50151		Oil cap	1	
12	21237-52051B		Drain plug	1	
13	21237-52062		Packing	1	

FIG.36 FRONT GUARD



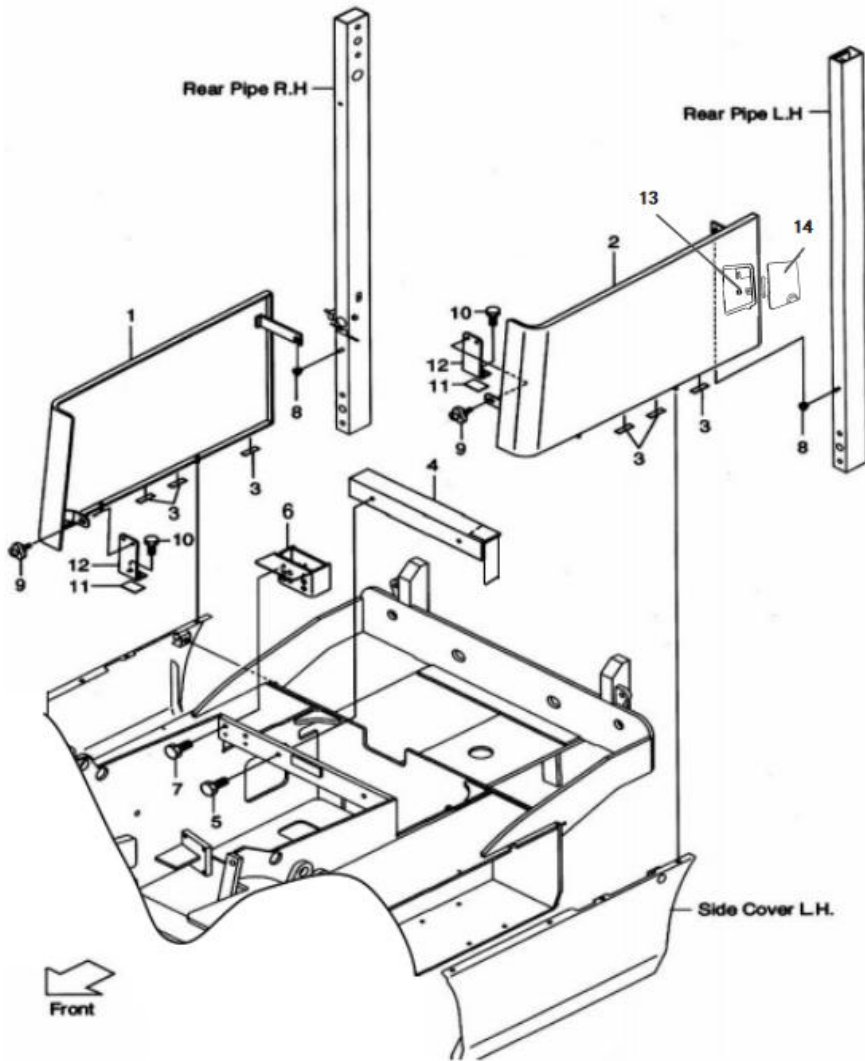
Item No	Part No.	Mark	Description	Req'd	Remarks: Serial No.
1	C73E6-10851		Left protective cover (2T-2.5T)	1	
	C73E6-10852		Left protective cover (3T-3.5T)	1	
2	C73E6-10861		Right protective cover (2-2.5T)	1	
	C73E6-10862		Right protective cover (3-3.5T)	1	
3	01100-12030		Bolt	2	
4	22216-14001		Washer	2	
5	01100-12030		Bolt	2	
6	22216-14001		Washer	2	
7	C73E6-12341B		Instrument front panel	1	
8	01100-14030		Bolt	4	
9	01100-14016		Washer	4	
10	01100-12030		Bolt	3	
11	01100-14016		Washer	3	
12	C73E6-10270B		Instrument rack	1	
13	01100-05030		Bolt	3	
14	01100-06016		Washer	3	

FIG.39 BONNET



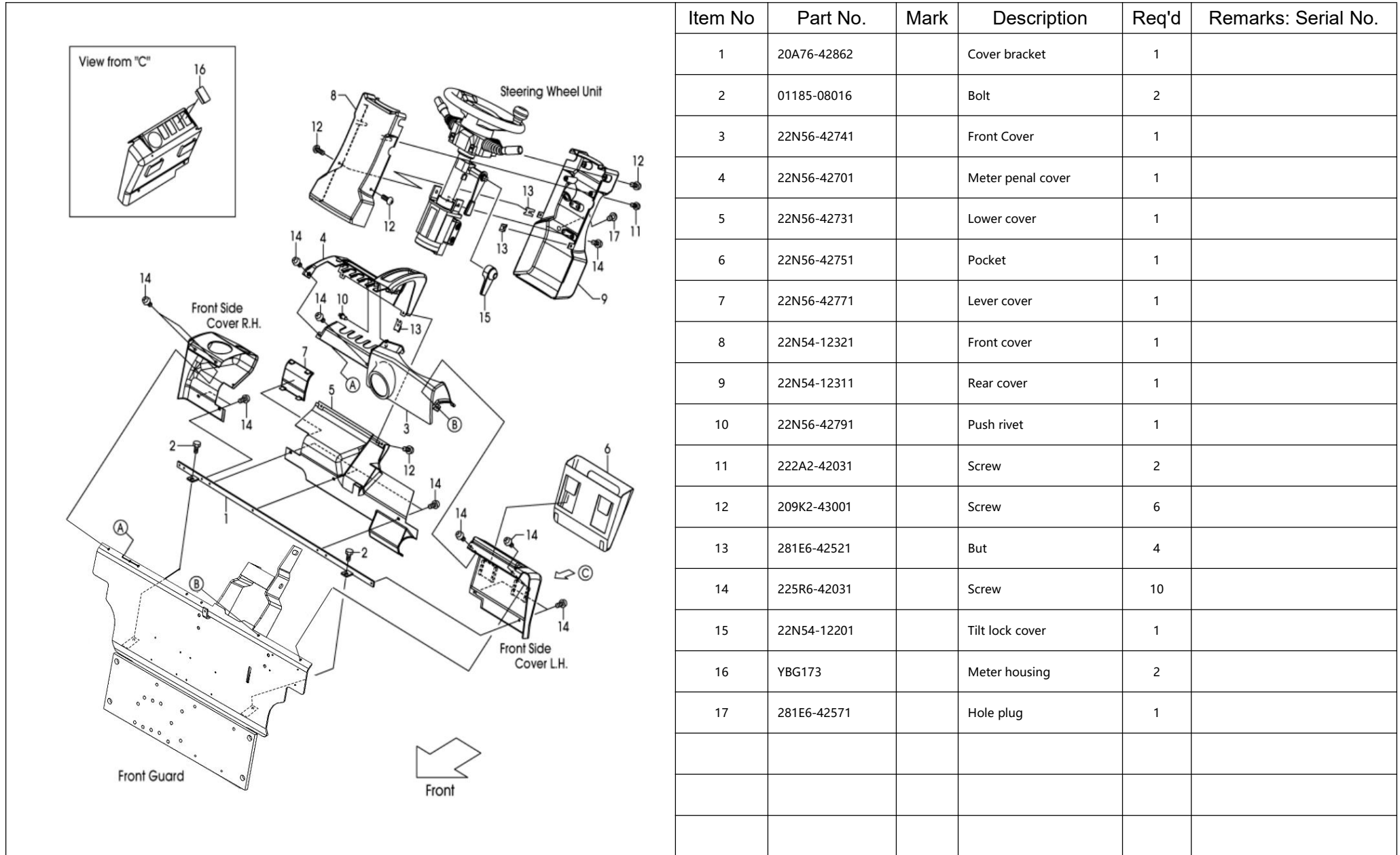
Item No	Part No.	Mark	Description	Req'd	Remarks: Serial No.
1	2F306-40301		Bonnet (2T-2.5t)	1	
	2F306-40302		Bonnet (3T-3.5T)	1	
2	GASSPRING		Spring, GAS	1	
3	256C5-62551		Collar	2	
4	01103-08028		Bolt	2	
5	27P16-42501		Pin, cotter	1	
6	23652-12051		Nut	1	
7	CT27416-42761		Catch. bonnet	1	
8	01030-08010		SCcrew	2	
9	25599-32001		Binder	1	
10	02010-00008		Waser	2	
11	GASSPRING1		Connecting rod	1	
12	80V7PZS560L-003		battery box (2T-2.5T)	1	
	80V7PZS560L-004		battery box (3T-3.5T)	1	

FIG.40 COVER



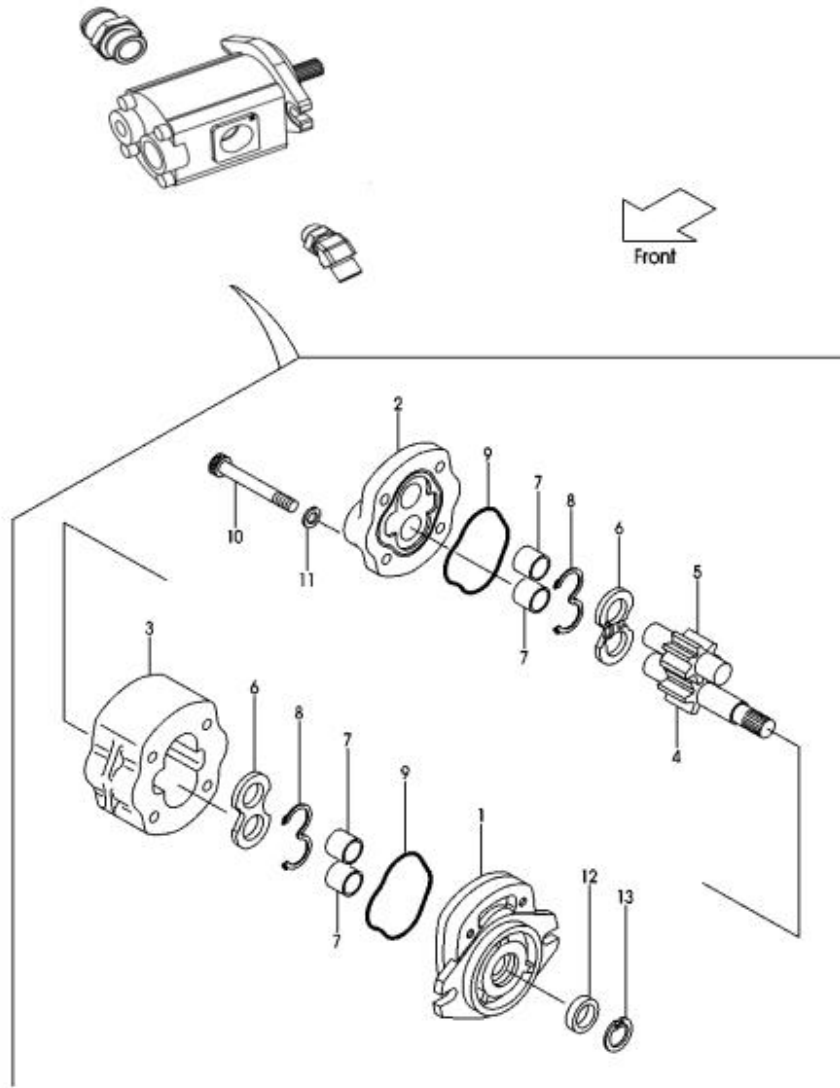
Item No	Part No.	Mark	Description	Req'd	Remarks: Serial No.
1	C73E6-10321B		Wia cover battery R.H (2T-2.5T)	1	
	C73E6-10341B		Wia cover battery R.H (3T-3.5T)	1	
2	C73E6-10331B	#	Wia cover battery L.H (2T-2.5T)	1	
	C73E6-10351B		Wia cover battery L.H (3T-3.5T)	1	
3	NO PART NO.	#	Rubber	6	
4	C73E6-10371		Angle	1	
5	01184-10025		Bolt	2	
6	281E6-42661A		ASS'Y bracket batt	1	
7	01183-08025		Bolt with washer	2	
8	278M6-42651		Cap rubber	2	
9	256C5-12671		Knob bolt	2	
10	01183-08016		Bolt	2	
11	281E6-42741		Rubber	2	
12	CT281E6-42281		Bracket battery cover	2	
13	FB-100-010-10		Clasp	1	
14	FB-100-011-10		Charging cover plate	1	

FIG.42 FRONT COVER



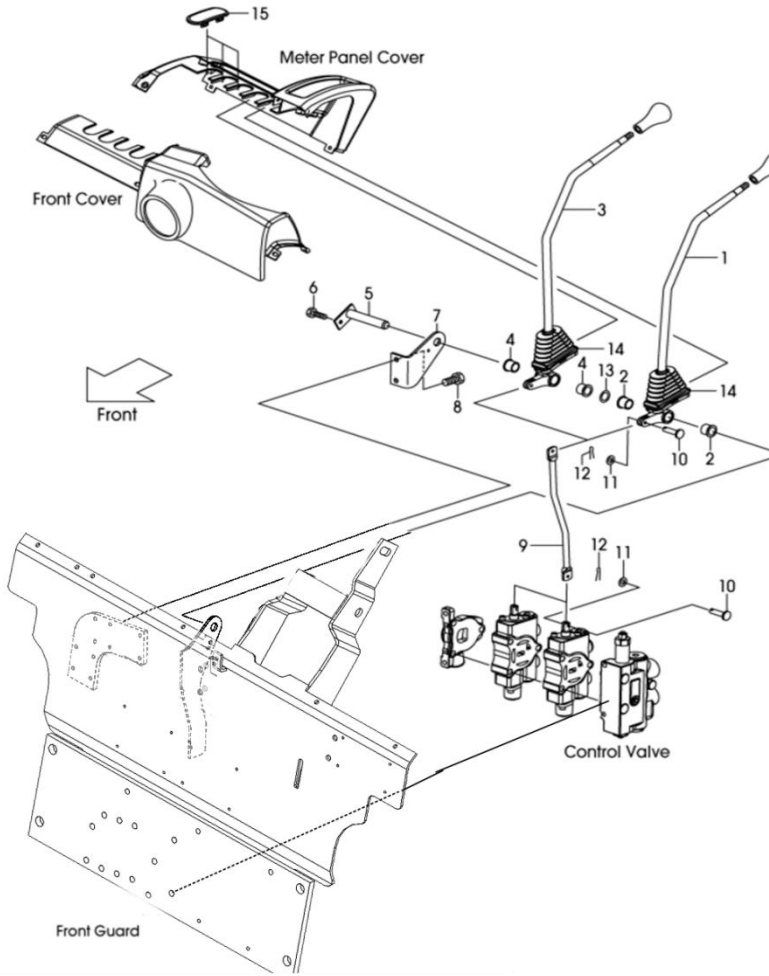
Item No	Part No.	Mark	Description	Req'd	Remarks: Serial No.
1	20A76-42862		Cover bracket	1	
2	01185-08016		Bolt	2	
3	22N56-42741		Front Cover	1	
4	22N56-42701		Meter penal cover	1	
5	22N56-42731		Lower cover	1	
6	22N56-42751		Pocket	1	
7	22N56-42771		Lever cover	1	
8	22N54-12321		Front cover	1	
9	22N54-12311		Rear cover	1	
10	22N56-42791		Push rivet	1	
11	222A2-42031		Screw	2	
12	209K2-43001		Screw	6	
13	281E6-42521		But	4	
14	225R6-42031		Screw	10	
15	22N54-12201		Tilt lock cover	1	
16	YBG173		Meter housing	2	
17	281E6-42571		Hole plug	1	

FIG.46 GEAR PUMP



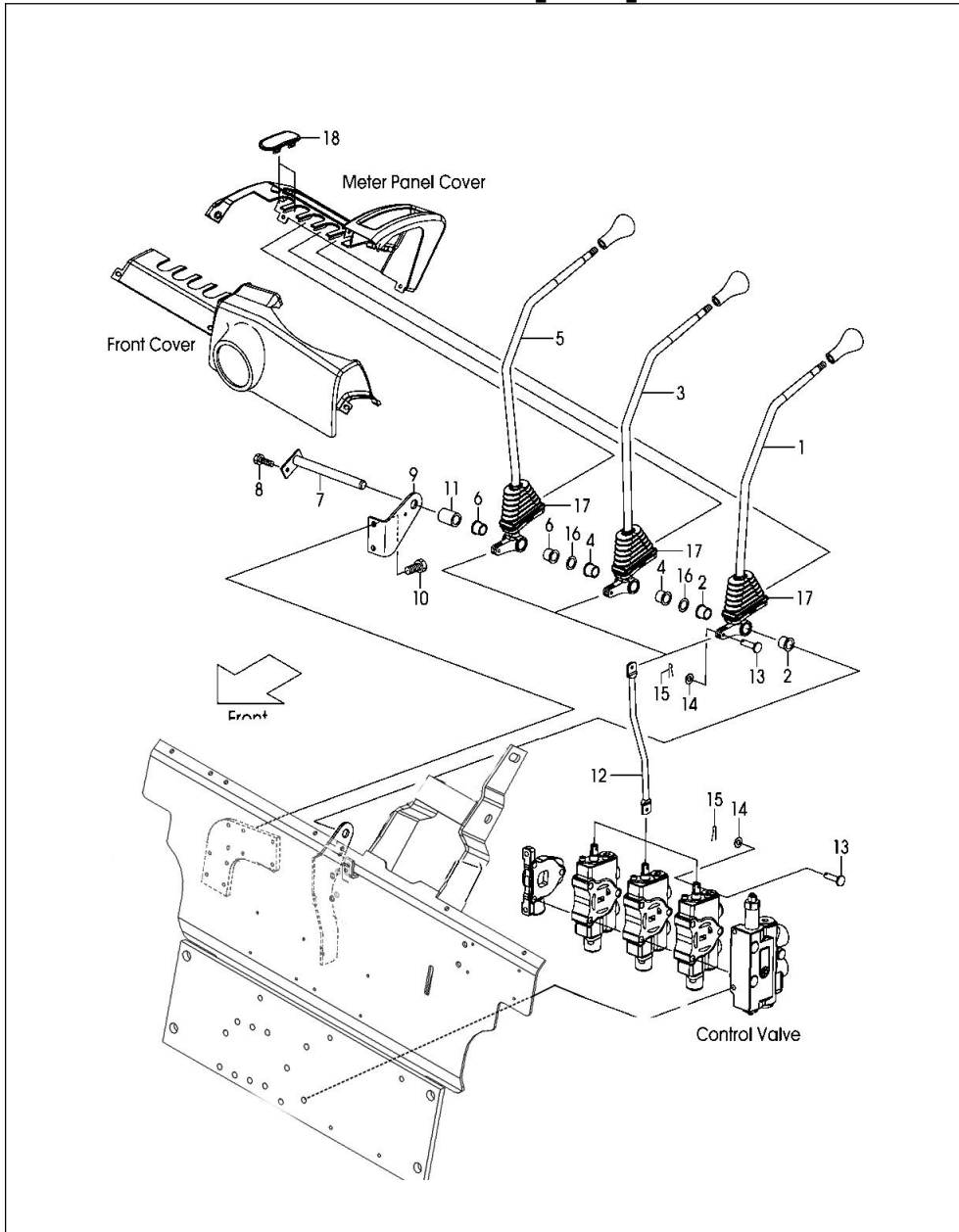
Item No	Part No.	Mark	Description	Req'd	Remarks: Serial No.
A1	TMG1C23A1H7-R		Gear pump ASSY	1	INC.1~13
901	BN-404-10236		Repair kit	1	INC. 8, 9,12,13
1	NO PART NO.		Front cover	1	
2	NO PART NO.		Rear cover	1	
3	NO PART NO.		Pump body	1	
4	NO PART NO.		Drive gear	1	
5	NO PART NO.		Driven gear	1	
6	NO PART NO.		Side Plate	2	
7	NO PART NO.		Bushing	4	
8	BN-402-12086		Gasket	2	
9	BN-402-12754		Gasket	2	
10	NO PART NO.		Bolt	4	
11	NO PART NO.		Washer	4	
12	BN-404-0014-15		Oil seal	1	
13	BN-404-00005-02		Snap ring	1	

FIG.49 VALVE CONTROL



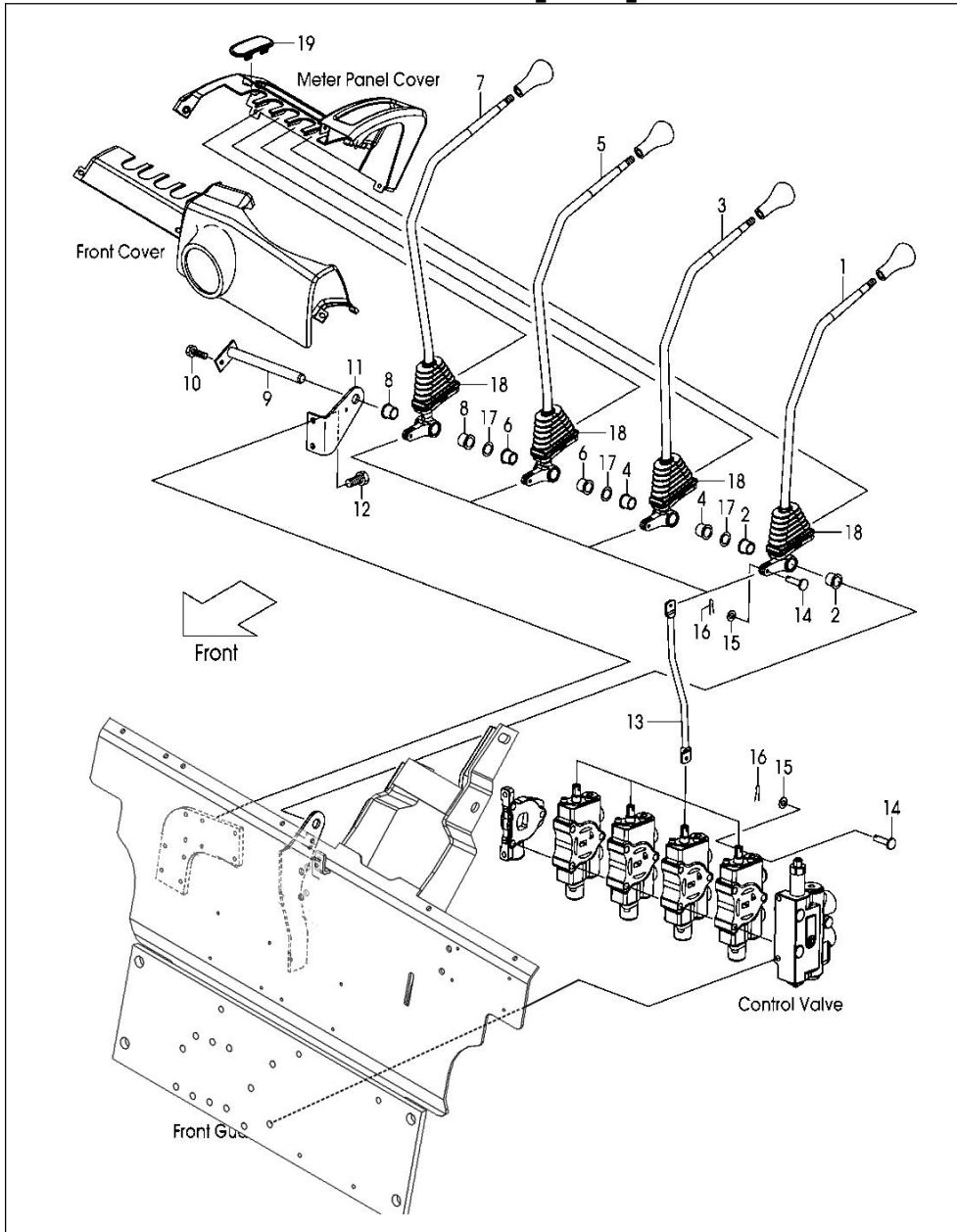
Item No	Part No.	Mark	Description	Req'd	Remarks: Serial No.
A1	2CN57-40011		Lift lever ASSY	1	INC. 1~2
1	2CN57-40101	#	Lift lever	1	
2	214A7-42071		Bushing	2	
A2	2CN57-40021		Tilt lever ASSY	1	INC. 3~4
3	2CN57-40201	#	Tilt lever	1	
4	214A7-42071		Bushing	2	
5	23647-40041		Shaft	1	
6	01183-06012		Bolt	1	
7	22N57-42001		Valve lever bracket	1	
8	01183-08012		Bolt	2	
9	C77J5-73101		Joint (2-2.5T)	2	
	C77J5-73201		Joint (3-3.5T)	2	
10	22717-40061		Clevis Pin	4	
11	02000-00005		Washer	4	
12	02200-16010		Cotter pin	4	
13	22517-40051		Shim, T-0.2	3	
14	22N57-42151		Valve stem protective sleeve	2	
15	22N57-42161		Valve lever cover	3	

FIG.50 VALVE CONTROL [3SV] 1/2



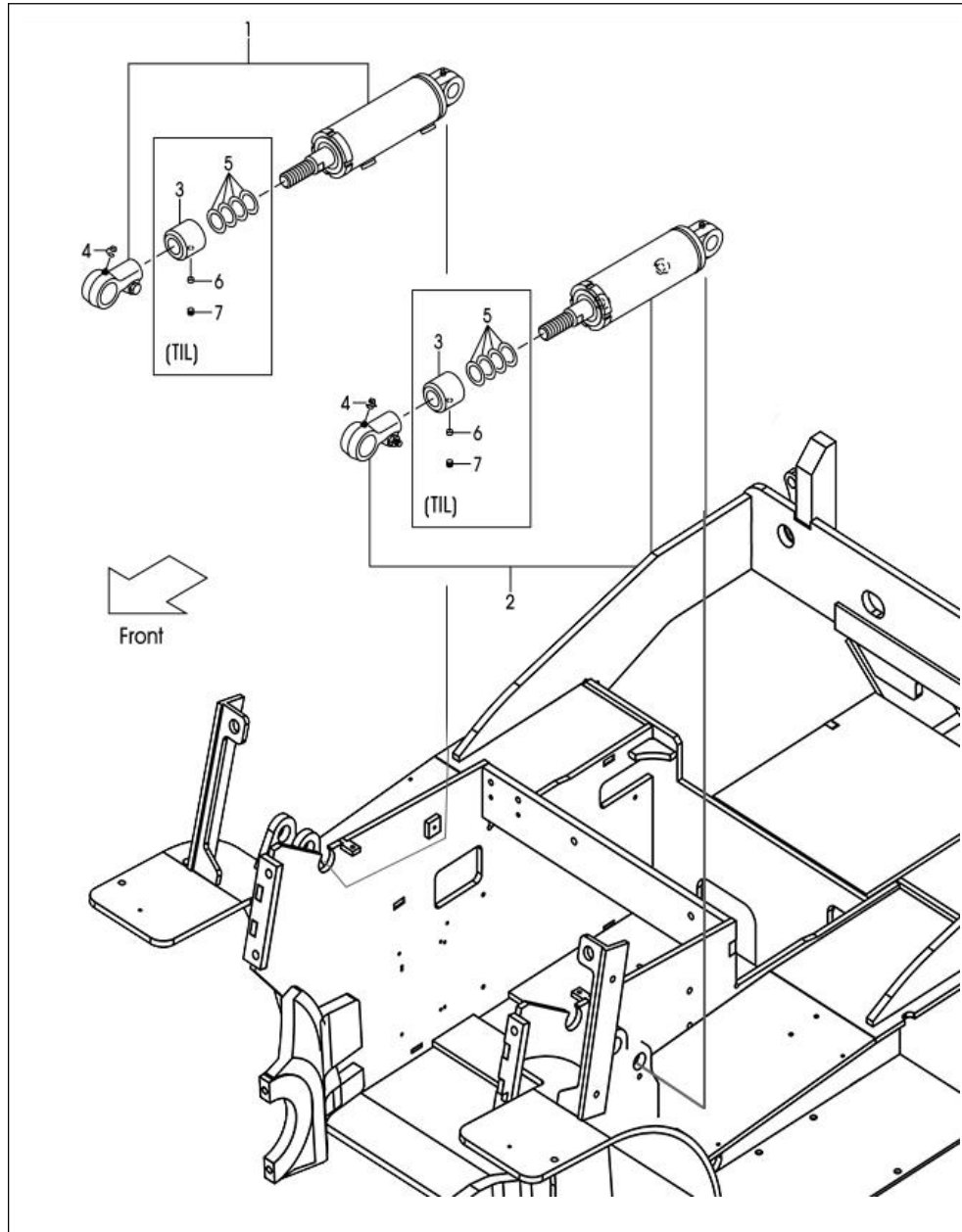
Item No	Part No.	Mark	Description	Req'd	Remarks: Serial No.
A1	2CN57-40011		Lift lever ASSY	1	[3SV] INC. 1~2
1	2CN57-40101.	#	Lift lever	1	[3SV]
2	214A7-42071		Bushing	2	[3SV]
A2	2CN57-40021		Tilt lever ASSY	1	[3SV] INC. 3~4
3	2CN57-40201	#	Tilt lever	1	[3SV]
4	214A7-42071		Bushing	2	[3SV]
A3	2CN57-40031		3 rd lever ASSY	1	[3SV] INC. 5~6
5	2CN57-40301	#	3 rd lever	1	[3SV]
6	214A7-42071		Bushing	2	[3SV]
7	23457-42041		shaft	1	[3SV]
8	01183-06012		Bolt	1	[3SV]
9	22N57-42001		Valve lever bracket	1	[3SV]
10	01183-08012		Bolt	2	[3SV]
11	23657-42131		Spacer sleeve	1	[3SV]
12	C77J5-73101		Joint (2-2.5T)	3	[3SV]
	C77J5-73201		Joint (3-3.5T)	3	[3SV]
13	22717-40061		Clevis pin	6	[3SV]
14	02000-00005		Washer	6	[3SV]
15	02200-16010		Cotter pin	6	[3SV]
16	22517-40051		Shim,T-0.2	6	[3SV]

FIG.51 VALVE CONTROL [4SV] 1/2



Item No	Part No.	Mark	Description	Req'd	Remarks: Serial No.
A1	2CN57-40011		Lift lever ASSY	1	[4SV] INC. 1~2
1	2CN57-40101	#	Lift lever	1	[4SV]
2	214A7-42071		Bushing	2	[4SV]
A2	2CN57-40021		Tilt lever ASSY	1	[4SV] INC. 3~4
3	2CN57-40201	#	Tilt lever	1	[4SV]
4	214A7-42071		Bushing	2	[4SV]
A3	2CN57-40031		3 rd lever ASSY	1	[4SV] INC. 5~6
5	2CN57-40301	#	3 rd lever	1	[4SV]
6	214A7-42071		Bushing	2	[4SV]
A4	2CN57-40041		4 th lever ASSY	1	[4SV] INC. 7~8
7	2CN57-40401	#	4 th lever	1	[4SV]
8	214A7-42071		Bushing	2	[4SV]
9	23457-42041		Shaft	1	[4SV]
10	01183-06012		Bolt	1	[4SV]
11	CD301YB-Y2003		Valve lever bracket	1	[4SV]
12	01183-08012		Bolt	2	[4SV]
13	C77J5-73101		Joint (2-2.5T)	4	[4SV]
	C77J5-73201		Joint (3-3.5T)	4	[4SV]
14	22717-40061		Clevis pin	8	[4SV]
15	02000-00005		Washer	8	[4SV]

FIG.56 TILT CYLINDER

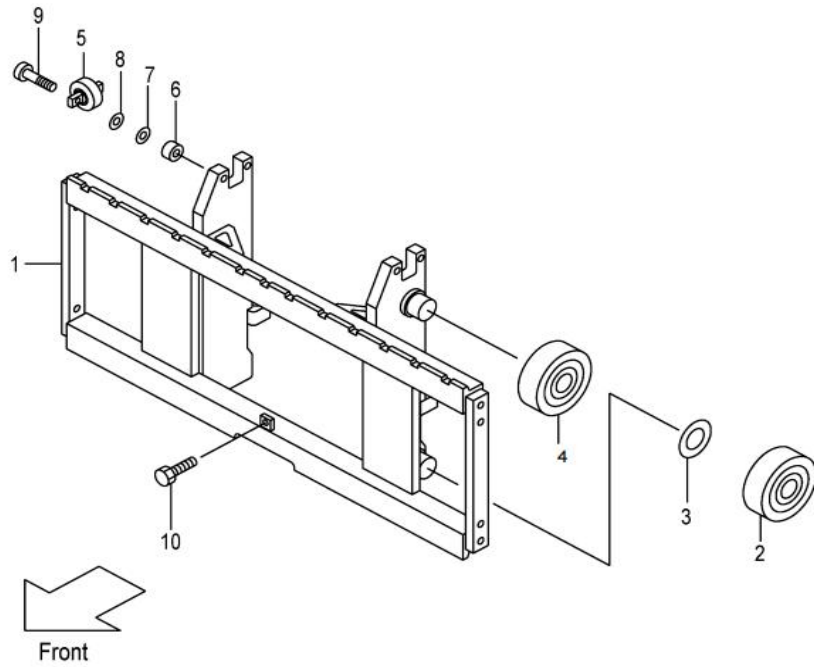


Item No	Part No.	Mark	Description	Req'd	Remarks: Serial No.
1	073E8-04711		Tilt cylinder assembly, RH (2-2.5T)	1	Lifting height < 4m
	073E8-04731		Tilt cylinder assembly, RH (2-2.5T)	1	Lifting height 4m~5m
	073E8-04751		Tilt cylinder assembly, RH (2-2.5T)	1	Lifting height 5m~6m
	FB-400-011-10		Tilt cylinder assembly, RH (3-3.5T)		Lifting height < 4m
	FB-400-012-10		Tilt cylinder assembly, RH (3-3.5T)		Lifting height 4m~5m
	FB-400-013-10		Tilt cylinder assembly, RH (3-3.5T)		Lifting height 5m~6m
2	073E8-04701		Tilt cylinder assembly, LH (2-2.5T)	1	Lifting height < 4m
	073E8-04721		Tilt cylinder assembly, LH (2-2.5T)	1	Lifting height 4m~5m
	073E8-04741		Tilt cylinder assembly, LH (2-2.5T)	1	Lifting height 5m~6m
	FB-400-014-10		Tilt cylinder assembly, LH (3-3.5T)		Lifting height < 4m
	FB-400-015-10		Tilt cylinder assembly, LH (3-3.5T)		Lifting height 4m~5m
	FB-400-016-10		Tilt cylinder assembly, LH (3-3.5T)		Lifting height 5m~6m
3	2T6-6		Sleeve	2	
	3T6-6		Sleeve	2	
4	22199-12401		Nipple cap	2	
5	22N58-52401		Shim, T-0.5	8	
6	01066-10012		Screw set	2	
7	23658-52401		Nylon plug	2	

FIG.58 LABEL AND NAMEPLATE

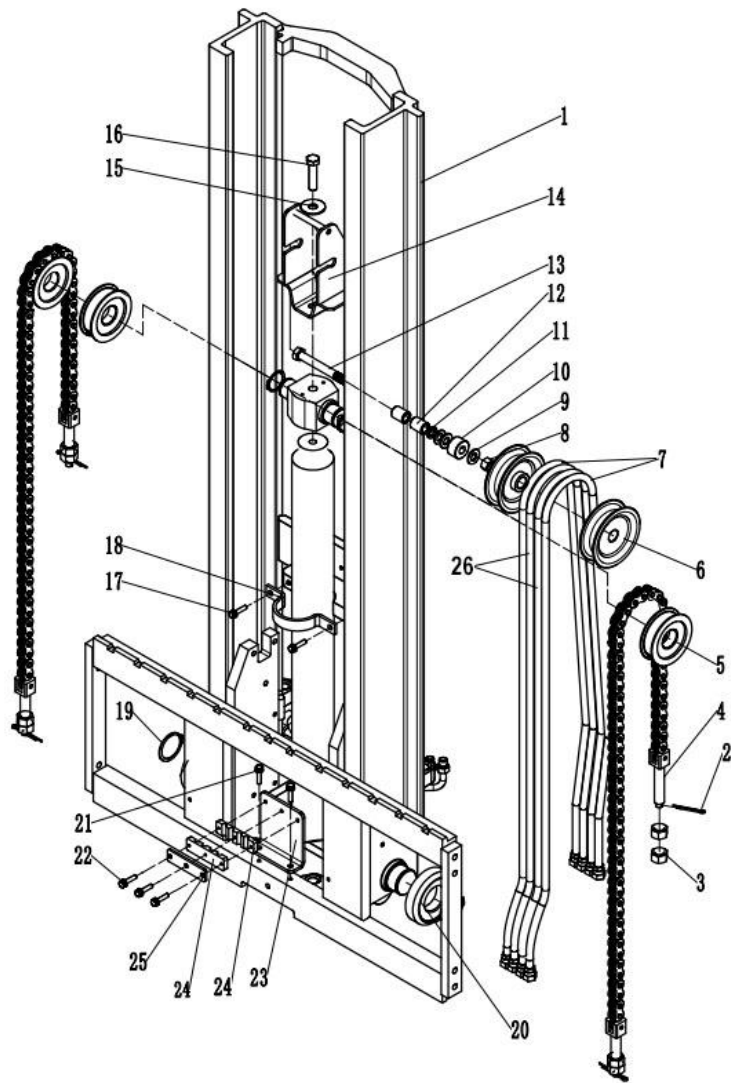
Item No	Part No.	Mark	Description	Req'd	Remarks: Serial No.
1	90-800-017-10		nameplate	1	
2	90-800-020-10		label	1	
3	90-800-050-10		label	1	
4	90-001-103-10		label	1	
5	90-800-018-10		nameplate	1	
6	90-800-040-10		label	1	
7	90-800-041-10		label	1	
8	90-800-042-10		label	1	
9	90-800-010-10		label	1	
10	90-800-030-10		label	1	
11	90-800-041-10		label	1	
12	90-800-070-10		label	2	
13	90-800-010-10		label	2	
14	90-800-060-10		IStop person	2	
15	90-800-061-10		ILifting position	2	
16	90-800-042-10		label	1	
17	90-800-022-10		label	1	
18	90-800-021-10		label	1	

FIG.60 LIFT BRACKET



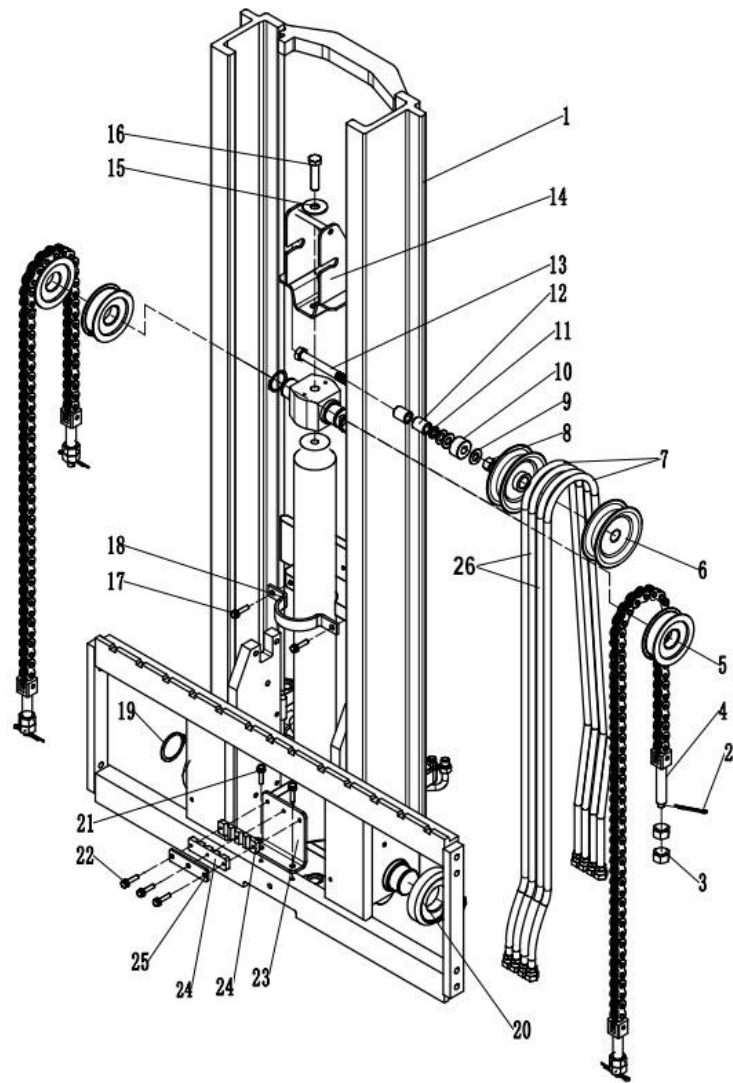
Item No	Part No.	Mark	Description	Req'd	Remarks: Serial No.
1	C22F8-20601H		Fork carriage (3T-3.5T)	1	
	C24K8-20602H		Fork carriage (2T-2.5T)	1	
2	ZC-980811NT		Composite roller	4	
3	GB894.1-1986		Clip 55	4	
4	ZC-980811NT		Composite roller	2	
5	ZC-23458-32052		Side roller	2	
6	C93J 8-02641		Spacer	4	
7	C93J 8-0X L09		Shim, T-0.2	5	
8	C93J 8-0X L09		Shim, T-1.0	5	
9	01103-10045		Bolt	4	
10	ZC-23458-32052		Side roller	4	
11	01184-12025		Bolt M10X30	1	

FIG.62 MAST 1/3



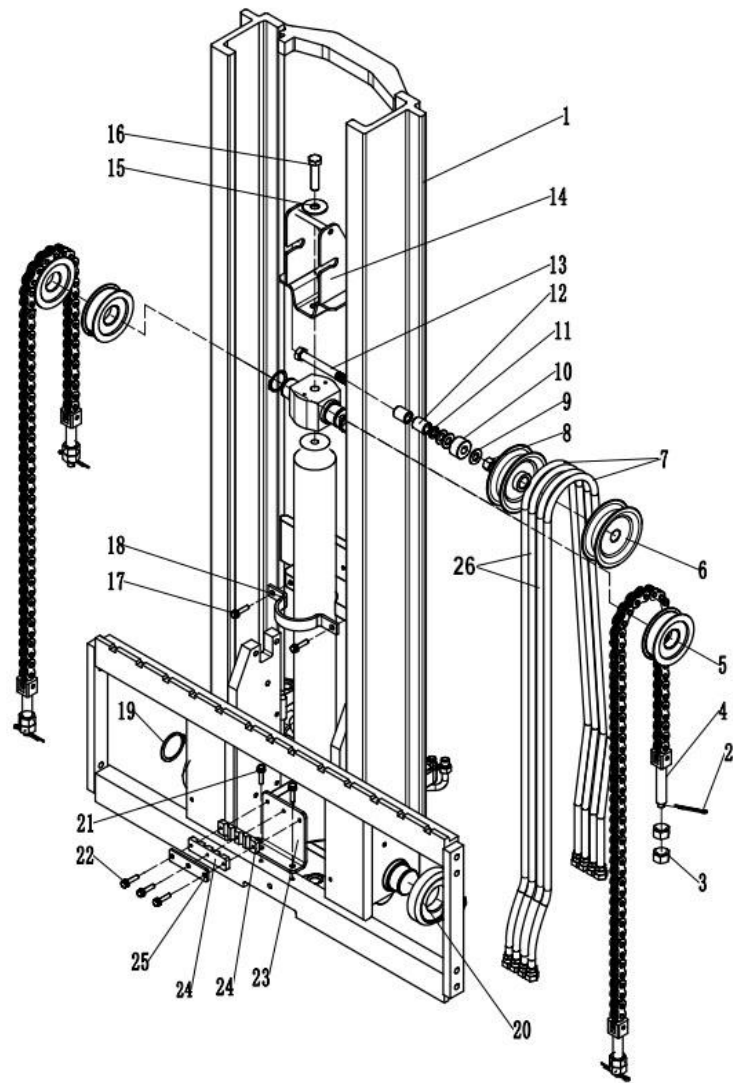
Item No	Part No.	Mark	Description	Req'd	Remarks: Serial No.
1	C73E8-2XL07H-00		Inner mast	1	
2	02200-03030		Pin	4	
3	22218-40191		Nut	4	
4	ZLH1623-065		Chain ASSY	2	
5	234A8-43501		Sheave	2	
6	62170-12731		Pulley	2	
7	GJ082-3250CY		High pressure hose	2	
8	WL-B4233-00016		Hexagon nut	1	
9	WL-B5310-00016		Flat gasket	3	
10	FH86-86		Spacer sleeve	5	
11	02011-00016		Washer	1	
12	FH87-87		Spacer sleeve	2	
13	WL-B0420-16070		Hexagon bolt M16X70	1	
14	C24K8-20801		Pulley support	1	
15	WL-GB9316		Spring washer	1	
16	01103-10016		Bolt	2	
17	01103-10010		Bolt	2	
18	C25K8-23011		Front cylinder retaining clip (YNMT)	1	
19	DQA-58		Clip retaining ring	8	
20	ZC-980811NT		Composite roller	4	

FIG.62 MAST 2/3



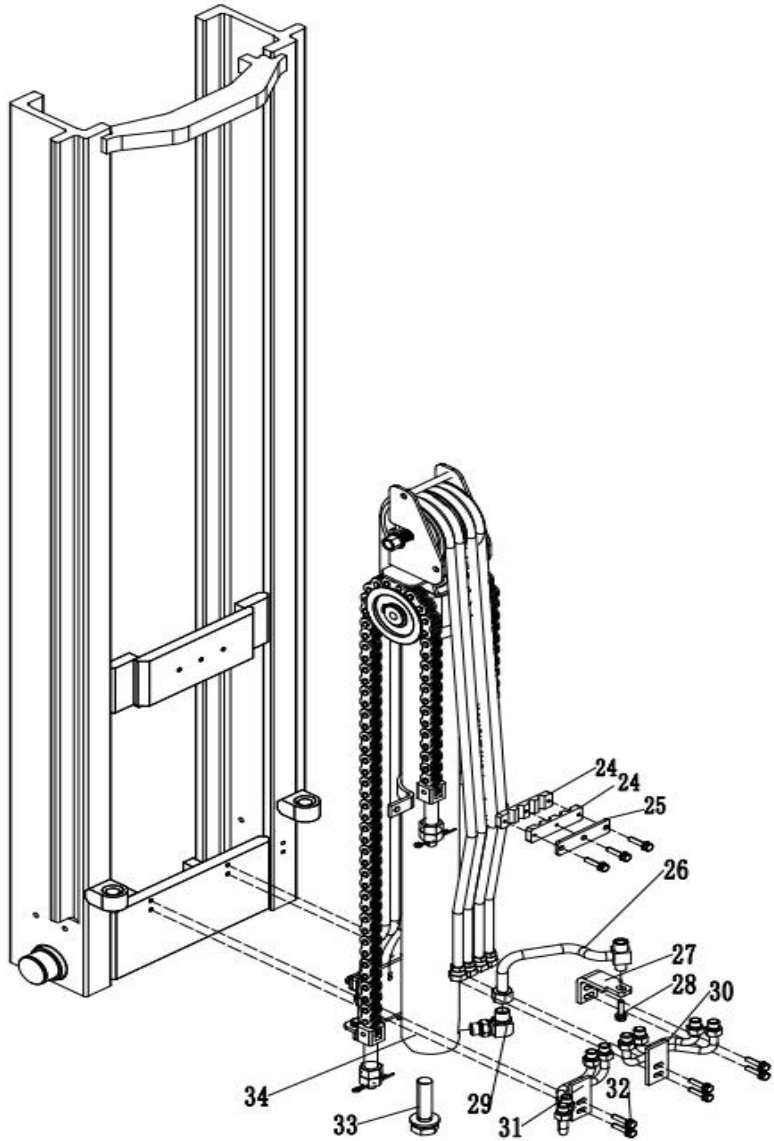
Item No	Part No.	Mark	Description	Req'd	Remarks: Serial No.
21	B0220-08020		Bolt	2	
22	B0220-08035		Bolt	6	
23	C24K8-21701H		Fixed plate	1	
24	C24K8-21712H		Pipe clamp	4	
25	C24K8-21711H		Pipe clamp	2	
26	GJ082-3050CY		High pressure hose	2	
1-1	C73E8-20501H		Inner mast ASSY 3600	2	2-2.5T
	C73E8-20511H		Inner mast ASSY 4000	2	
	C73E8-20521H		Inner mast ASSY 4350	2	
	C73E8-20531H		Inner mast ASSY 4800	2	
	C73E8-20551H		Inner mast ASSY 5000	2	
	C73E8-20561H		Inner mastASSY 5500	2	
	C73E8-20571H		Inner mast ASSY 6000	2	
	C73E8-20581H		Inner mast ASSY 4500	2	

FIG.62 MAST 3/3



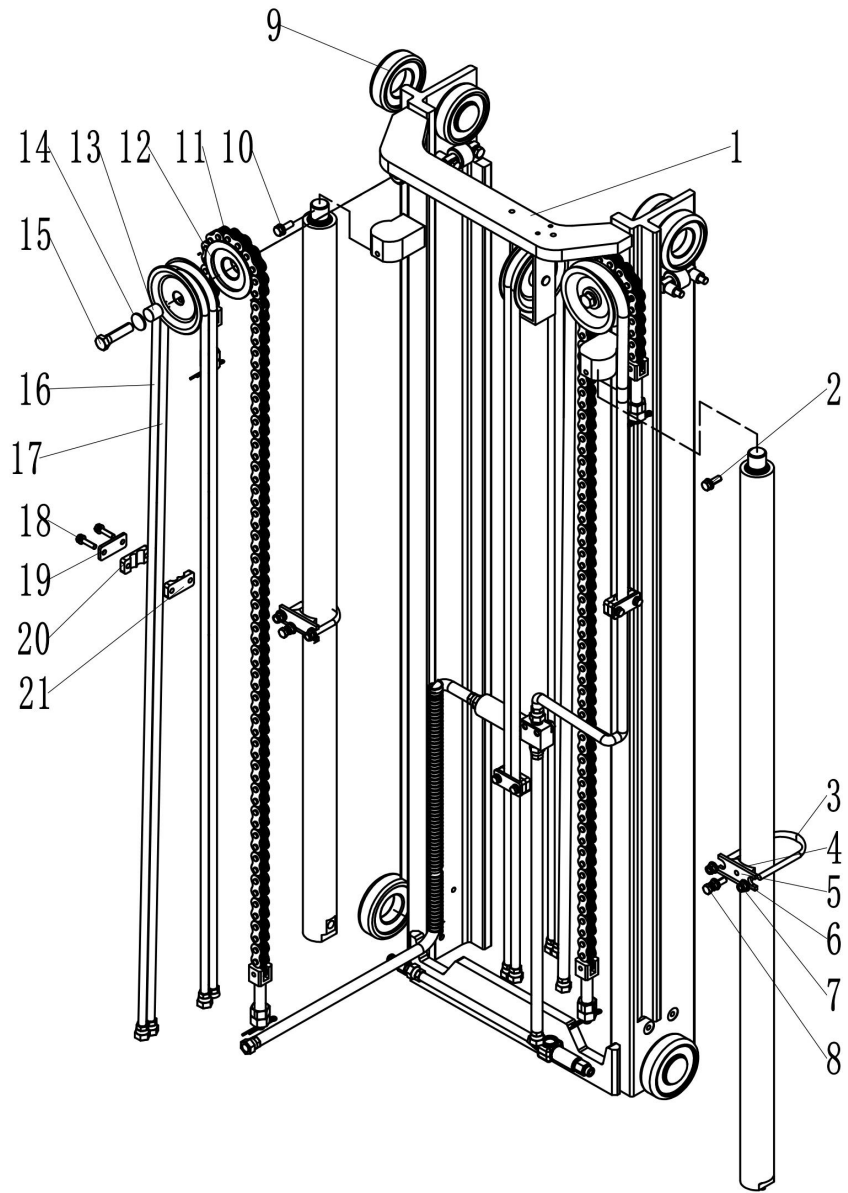
Item No	Part No.	Mark	Description	Req'd	Remarks: Serial No.
1-2	C73E8-21501H		Inner mast ASSY 3600	2	3-3.5T
	C73E8-21511H		Inner mast ASSY 4000	2	
	C73E8-21521H		Inner mast ASSY 4350	2	
	C73E8-21531H		Inner mast ASSY 4800	2	
	C73E8-21551H		Inner mast ASSY 5000	2	
	C73E8-21561H		Inner mast ASSY 5500	2	
	C73E8-21571H		Inner mast ASSY 6000	2	
	C73E8-21581H		Inner mast ASSY 4500	2	

FIG.63 LIFT CYLINDER (FRONT) 2/2



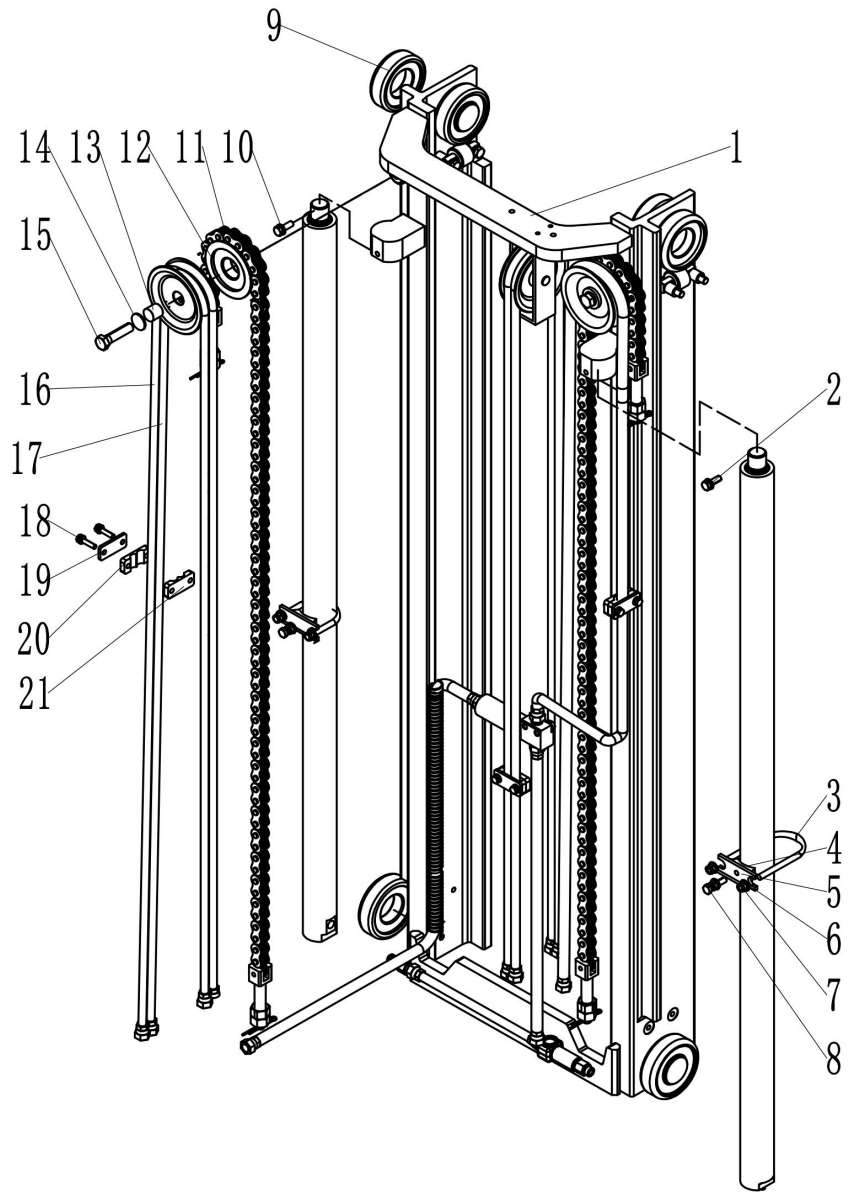
Item No	Part No.	Mark	Description	Req'd	Remarks: Serial No.
34	CT212YO-80451		Front cylinder 3600	1	2-2.5T
	CT212YO-80461		Front cylinder 4000	1	
	CT212YO-80481		Front cylinder 4350	1	
	CT212YO-80491		Front cylinder 4500	1	
	CT212YO-80501		Front cylinder 4800	1	
	CT212YO-80511		Front cylinder 5000	1	
	CT212YO-80521		Front cylinder 5500	1	
	CT212YO-80531		Front cylinder 6000	1	
	CT212TO-80451		Front cylinder 3600	1	3-3.5T
	CT212TO-80461		Front cylinder 4000	1	
	CT212TO-80481		Front cylinder 4350	1	
	CT212TO-80491		Front cylinder 4500	1	
	CT212TO-80501		Front cylinder 4800	1	
	CT212TO-80511		Front cylinder 5000	1	
	CT212TO-80521		Front cylinder 5500	1	
	CT212TO-80531		Front cylinder 6000	1	

FIG.64 LIFT CYLINDER (REAR) 1/3



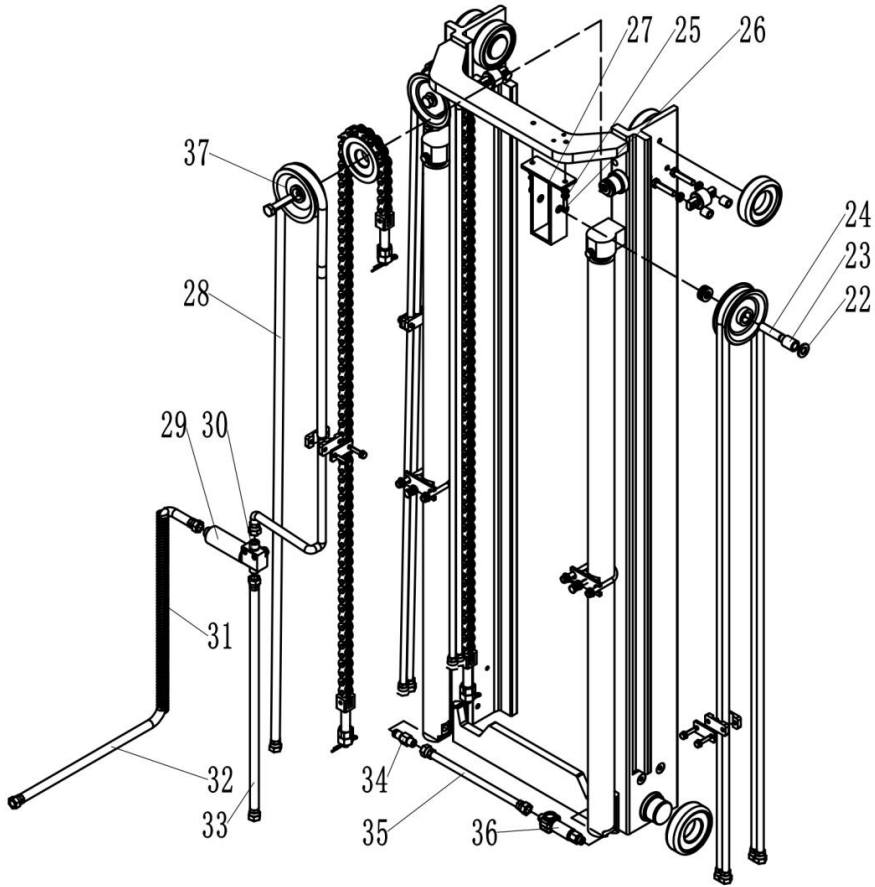
Item No	Part No.	Mark	Description	Req'd	Remarks: Serial No.
1-1	C73E8-20401H		Middle frame ASSY 3600	1	2-2.5T
	C73E8-20411H		Middle frame ASSY 4000	1	
	C73E8-20421H		Middle frame ASSY 4350	1	
	C73E8-20431H		Middle frame ASSY 4800	1	
	C73E8-20441H		Middle frame ASSY 5000	1	
	C73E8-20461H		Middle frame ASSY 5500	1	
	C73E8-20471H		Middle frame ASSY 6000	1	
	C73E8-20481H		Middle frame ASSY 4500	1	
1-2	C73E8-21401H		Middle frame ASSY 3600	1	3-3.5T
	C73E8-21411H		Middle frame ASSY 4000	1	
	C73E8-21421H		Middle frame ASSY 4350	1	
	C73E8-21431H		Middle frame ASSY 4500	1	
	C73E8-21441H		Middle frame ASSY 4800	1	
	C73E8-21461H		Middle frame ASSY 5000	1	
	C73E8-21471H		Middle frame ASSY 5500	1	
	C73E8-21481H		Middle frame ASSY 6000	1	
2	02000-20010		Washer	4	
3	D20B8-42061		U clamp	2	
4	01402-00010		Cylinder support block	2	
5	01120-10030		Cylinder retaining plate	2	

FIG.64 LIFT CYLINDER (REAR) 2/3



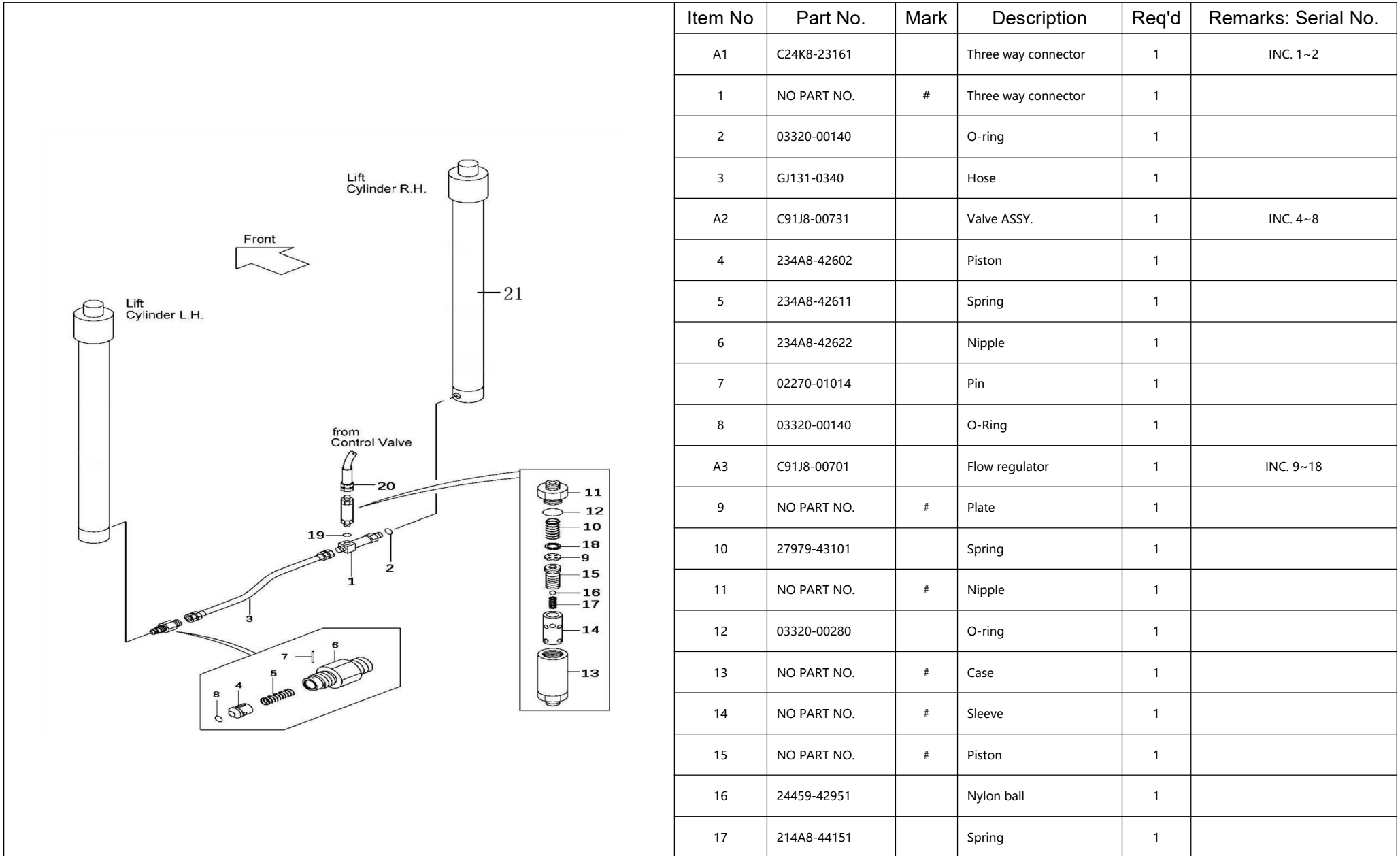
Item No	Part No.	Mark	Description	Req'd	Remarks: Serial No.
6	22N58-43011		Support	2	
7	22N58-43811		Shim, T-0.5	4	
8	234A8-42551		Bolt	2	
9	ZC-980811NT		Main roller	10	
10	02000-20010		Washer	4	
11	ZLH1623-079		Chain ASSY	2	
12	ZC-780708K		Sprocket wheel	4	
13	C23F8-20311		Middle mast VFHM	1	
14	62050-12331		Spacer	2	
15	62170-12731		Bolt	6	
16	GJ081-3900		High pressure hose	2	
17	GJ081-3950		High pressure hose	2	
18	B0220-08030		Bolt	4	
19	C24K8-21701H		Fixed plate	4	
20	C24K8-21731		Rubber pipe clip	4	
21	C24K8-21741		Rubber pipe clip	4	

FIG.65 LIFT CYLINDER (REAR) 3/3



Item No	Part No.	Mark	Description	Req'd	Remarks: Serial No.
22	90-092-016-10		gasket	4	
23	C24K8-21401		Spacer sleeve	2	
24	2CN58-52301		pin	2	
25	90-092-010-10		gasket	4	
26	WL-B0220-08040		bolt	2	
27	C24K8-20813		Pulley support	1	
28	GJ131-3100		High pressure hose	1	
29	C91J8-00701		Governor valve	1	
30	C91J8-22661		THREE-WAY-ASSY	1	
31	23657-42131A		Spacer sleeve	1	
32	GJ131-0880WGS		High pressure hose	1	
33	GJ131-0640		High pressure hose	1	
34	C91J8-00731		Shutoff valve	1	
35	GJ131-0340		High pressure hose	1	
36	C24K8-23161		THREE-WAY-ASSY	1	

FIG.66 MAST PIPING 1/2



Item No	Part No.	Mark	Description	Req'd	Remarks: Serial No.
A1	C24K8-23161		Three way connector	1	INC. 1~2
1	NO PART NO.	#	Three way connector	1	
2	03320-00140		O-ring	1	
3	GJ131-0340		Hose	1	
A2	C91J8-00731		Valve ASSY.	1	INC. 4~8
4	234A8-42602		Piston	1	
5	234A8-42611		Spring	1	
6	234A8-42622		Nipple	1	
7	02270-01014		Pin	1	
8	03320-00140		O-Ring	1	
A3	C91J8-00701		Flow regulator	1	INC. 9~18
9	NO PART NO.	#	Plate	1	
10	27979-43101		Spring	1	
11	NO PART NO.	#	Nipple	1	
12	03320-00280		O-ring	1	
13	NO PART NO.	#	Case	1	
14	NO PART NO.	#	Sleeve	1	
15	NO PART NO.	#	Piston	1	
16	24459-42951		Nylon ball	1	
17	214A8-44151		Spring	1	

FIG.66 MAST PIPING 2/2

Item No	Part No.	Mark	Description	Req'd	Remarks: Serial No.	
18	02110-00018		Snap ring	1		
19	03320-00180		O-ring, M22*1.5	1		
20	GJ131-0540		Hose	1		
21	C22F8-22101		Side casing 3600	2	2T~2.5T	
	C22F8-22111		Side casing 4000	2		
	C22F8-22131		Side casing 4350	2		
	C22F8-22141		Side casing 4500	2		
	C22F8-22151		Side casing 4800	2		
	C22F8-22161		Side casing 5000	2		
	C22F8-22171		Side casing 5500	2		
	C22F8-22181		Side casing 6000	2		
	C24K8-21101		Side casing 3600	2		3T~3.5T
	C24K8-21111		Side casing 4000	2		
C24K8-21131		Side casing 4350	2			
C24K8-21141		Side casing 4500	2			
C24K8-21151		Side casing 4800	2			
C24K8-21161		Side casing 5000	2			
C24K8-21171		Side casing 5500	2			
C24K8-21181		Side casing 6000	2			

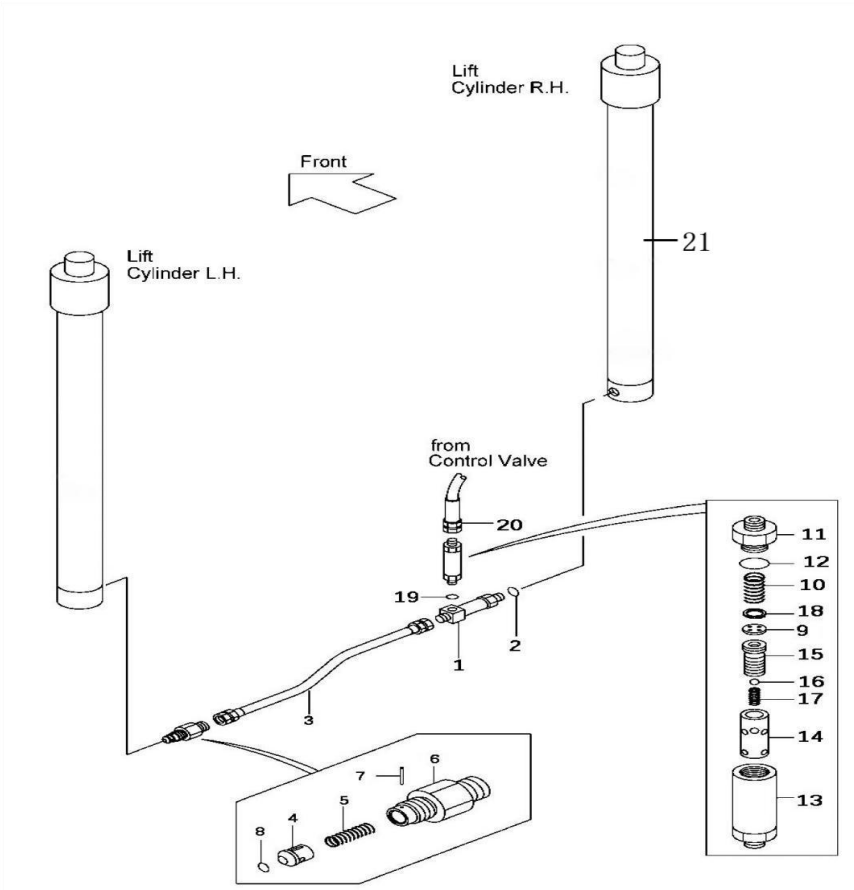
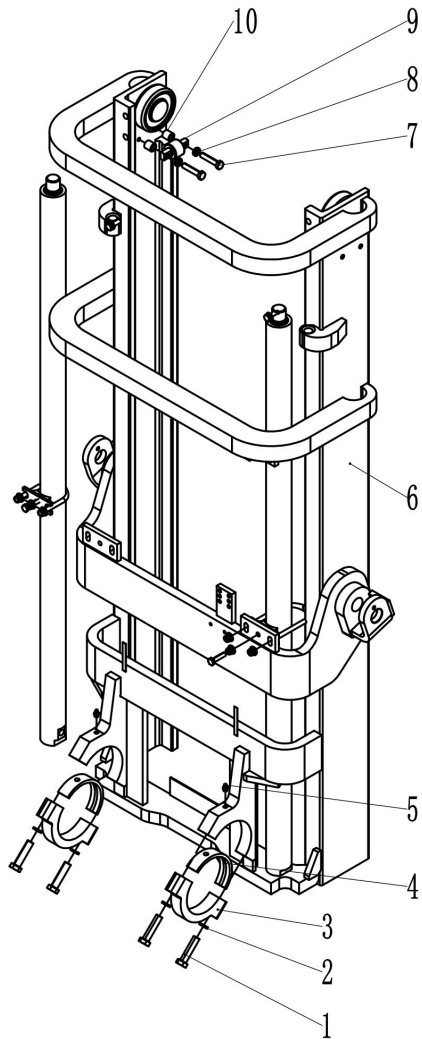
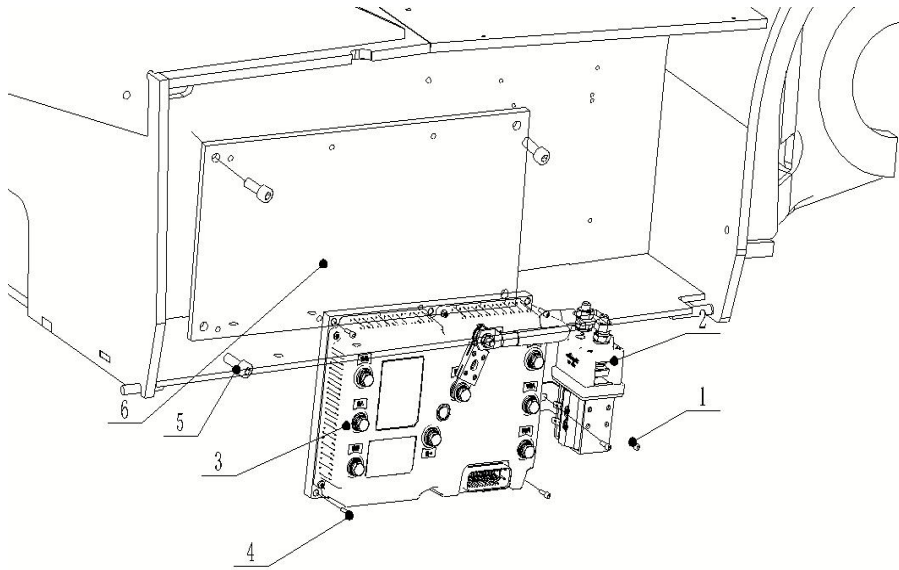


FIG.67 OUTER MAST 1/2



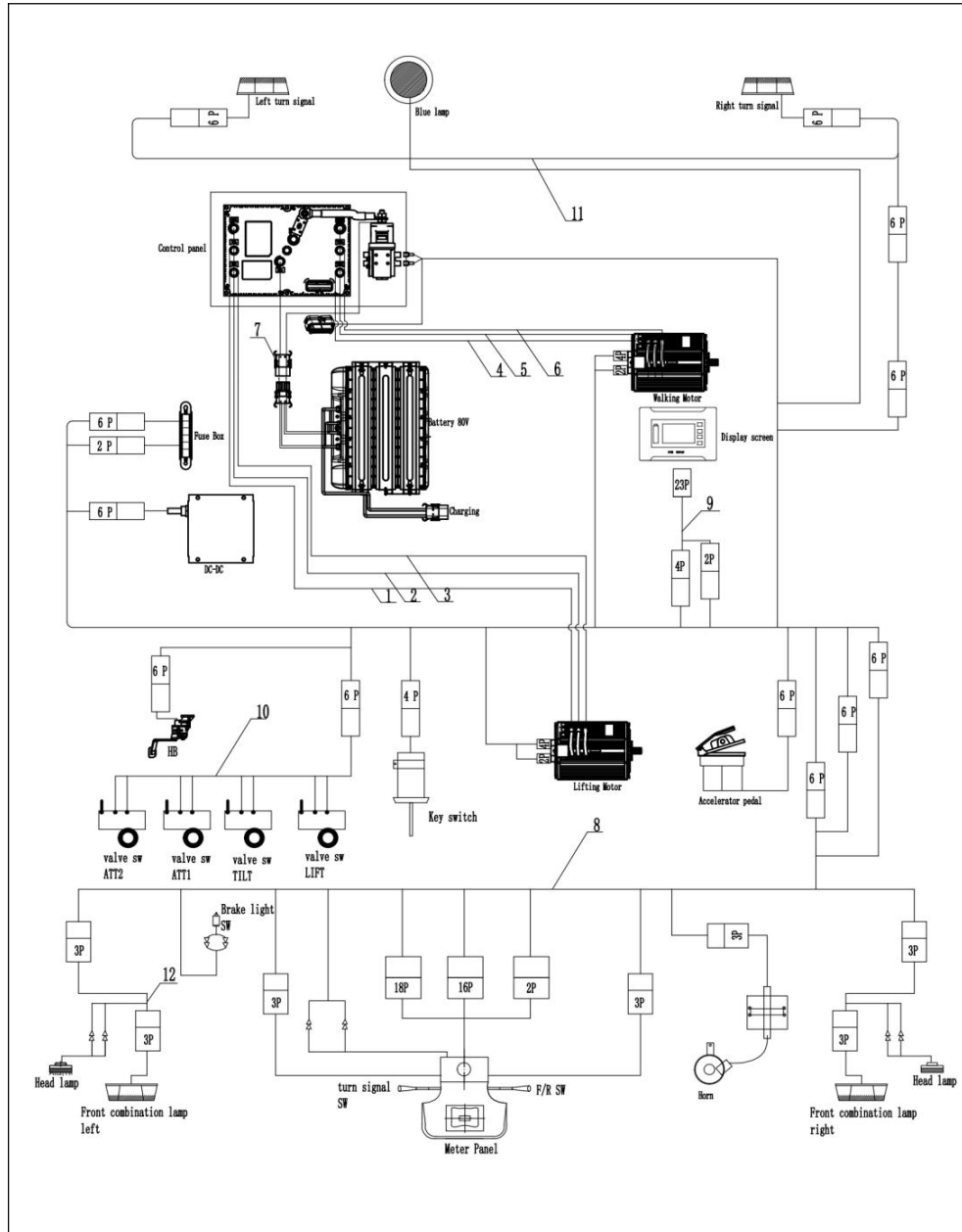
Item No	Part No.	Mark	Description	Req'd	Remarks: Serial No.
1	01103-16065		Bolt	4	
2	02011-00016		Washer	4	
3	C91J8-02001		Cap (2T-2.5T)	2	
	C91J8-02011		Cap (3T-3.5T)	2	
4	C91J9-02001		Bushing	2	
5	04901-00100		Fitting	2	
6	C73E8-20201H		Outer frame ASSY 3600	2	2T-2.5T
	C73E8-20211H		Outer frame ASSY 4000	2	
	C73E8-20221H		Outer frame ASSY 4350	2	
	C73E8-20231H		Outer frame ASSY 4800	2	
	C73E8-20241H		Outer frame ASSY 5000	2	
	C73E8-20261H		Outer frame ASSY 5500	2	
	C73E8-20271H		Outer frame ASSY 6000	2	
	C73E8-20281H		Outer frame ASSY 4500	2	3T-3.5T
	C73E8-21201H		Outer frame ASSY 3600	2	
	C73E8-21211H		Outer frame ASSY 4000	2	
	C73E8-21221H		Outer frame ASSY 4350	2	
	C73E8-21231H		Outer frame ASSY 4800	2	
	C73E8-21241H		Outer frame ASSY 5000	2	
	C73E8-21261H		Outer frame ASSY 5500	2	

FIG.68 CONTROLLER



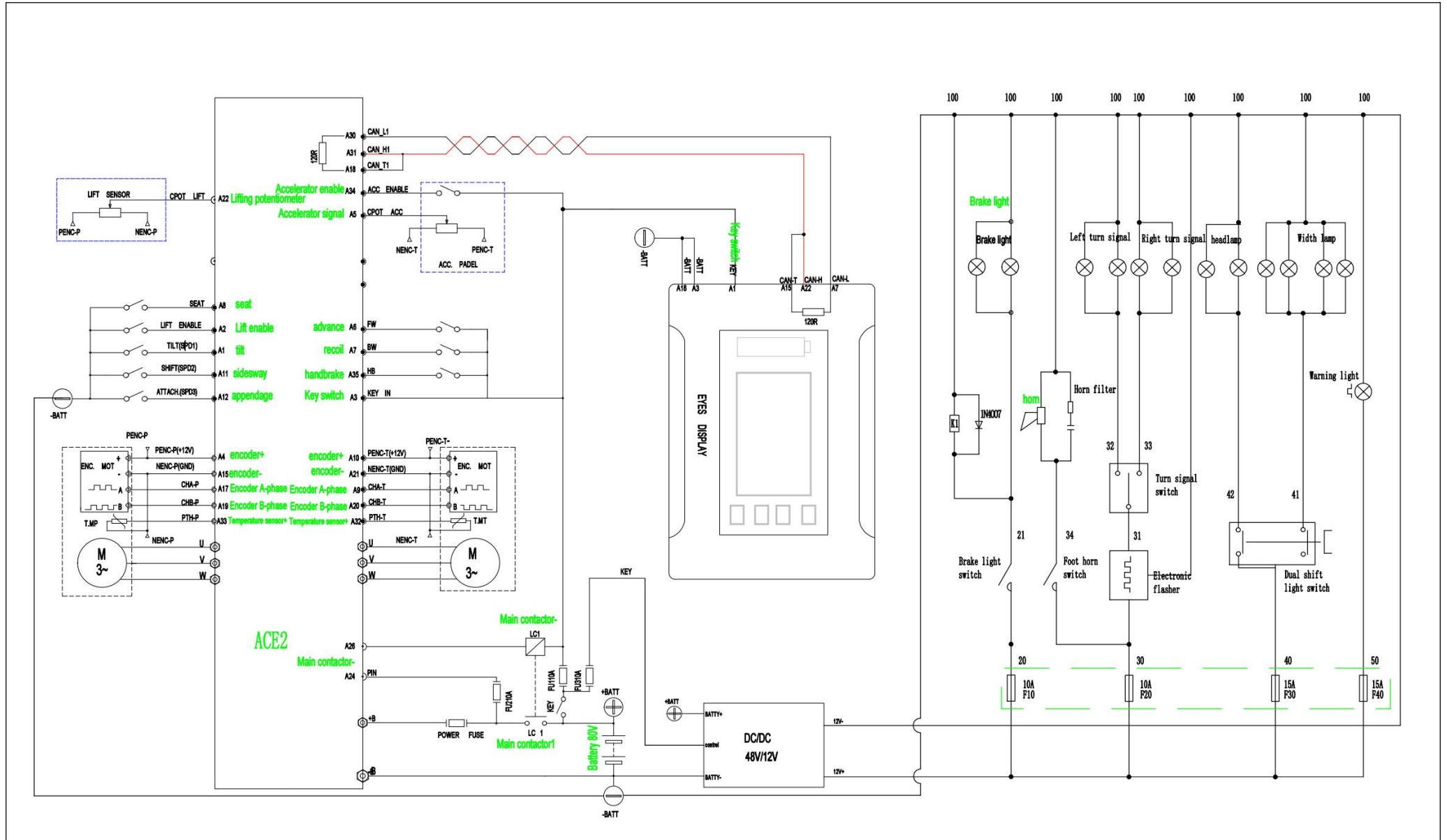
Item No	Part No.	Mark	Description	Req'd	Remarks: Serial No.
1	FB30-500-200-10		Controller panel	1	
2	011-100-10		Contact	1	
3	011-100-11		Controller	1	
4	011-100-12		bolt	4	
5	011-100-13		bolt	4	
6	W63-41		Controller mounting plate welded	1	
7					
8					
9					
10					
11					
12					
13					
14					

FIG.71 CABLE



Item No	Part No.	Mark	Description	Req'd	Remarks: Serial No.
1	FB25-560-001-10		Motor line SU	1	
2	FB25-560-002-10		Motor line SV	1	
3	FB25-560-003-10		Motor line SW	1	
4	FB25-560-004-10		Motor line MU	1	
5	BF25-560-005-10		Motor line MV	1	
6	FB25-560-006-10		Motor line MW	1	
7	FB25-560-007-10		Battery cable	1	
8	FB25-560-008-10		Main wire harness	1	
9	FB25-560-009-10		Mater wire harness	1	
10	FB25-560-010-10		Quadruple valve switch	1	
11	FB25-560-011-10		Top guard frame line A	1	
12	FB25-560-012-10		Top guard frame line B	1	

FIG.72 ELECTRIC CONTROL SCHEMATIC



ISSUED: OCT., 2023

All rights reserved